



**CRESCENT**

Storage





# TABLE OF CONTENTS

|                                       |                                         |
|---------------------------------------|-----------------------------------------|
| <b>Chests..... 4</b>                  | <b>Topsides ..... 26</b>                |
| Site-Vault™ Heavy-Duty Chests ..... 5 | Aluminum.....26                         |
| Tradesman Steel Chests ..... 6        | Steel.....27                            |
| High-Capacity Drop-Front Chest .... 7 |                                         |
| Slope Lid Chest ..... 7               | <b>Drawer Storage..... 33</b>           |
| Welder’s Box ..... 8                  | Long Stacked Models .....33             |
| Embedded Lock Small Chest.....8       | Long Floor Models.....34                |
|                                       | Tall Drawer Units.....35                |
| <b>Piano Boxes ..... 9</b>            | <b>Truck Chests ..... 29</b>            |
| Site-Vault™ Piano Boxes..... 10       | Gear-Lock™ Aluminum.....29              |
| Heavy Duty Piano Box.....11           | Aluminum.....30                         |
|                                       | Steel.....31                            |
| <b>Field Offices ..... 12</b>         | Portable .....31                        |
| Field Office .....12                  | <b>Underbed Boxes ..... 27</b>          |
| Mobile Field Office .....12           | Mounting Brackets.....28                |
| Tradesman Office .....12              |                                         |
| <b>Cabinets ..... 13</b>              | <b>Trailer Tongue Boxes ..... 33</b>    |
| Mesh Cabinets.....14                  | Aluminum Tongue Boxes.....33            |
| Heavy-Duty Cabinets.....15            |                                         |
| Extra Heavy-Duty Bin Cabinet .....15  | <b>Transfer Tanks ..... 36</b>          |
| Rolling Clam Shell Cabinet .....16    | Aluminum Liquid Transfer Tanks ..36     |
| Rolling Work Benches .....16          | Fuel-N-Tool Transfer Tank ..... 37      |
| Drawer Cabinet.....16                 | Steel Transfer Tanks ..... 37           |
| <b>Crossovers..... 17</b>             |                                         |
| Gear-Lock™ Aluminum.....17            | <b>Tool Bags..... 38</b>                |
| Gear-Lock™ Steel.....20               | Tradesman Backpack.....38               |
| RSL™ Aluminum .....21                 | Tradesman Closed Bags..... 40           |
| Slim Line.....22                      | Tradesman Open Bags..... 40             |
| Hybrid.....23                         | Contractor Bag .....41                  |
|                                       | Tradesman Rolling Bag.....41            |
| <b>Innersides ..... 24</b>            | <b>Parts &amp; Accessories ..... 42</b> |
| Aluminum.....24                       |                                         |
| Gear-Lock™ Aluminum .....25           | <b>No B.S. Warranty Info ..... 43</b>   |
| Gear-Lock™ Steel.....25               |                                         |

## SITE-VAULT™ HEAVY-DUTY CHESTS

**Tough is table stakes. Smart sets you apart.**

Designed for optimal organization, premium access, weather resistance and security, our chests are built to work smarter and harder. Our patented locking system has a full-length steel lock console with three locking points and fluorescent reflective orange tape to indicate when the box is in the locked or unlocked position.



### Reinforced Lid with Full-Length Bolster

Reduces damage from excess stacking weight and resists pry bar entry

### Site-Vault™ Security System

The patented system has a full-length steel lock console with three locking points and fluorescent reflective orange tape that indicates chest is locked

### EZ-Lock Arm

Securely locks lid open

### Dual Built-In Lid Storage Bins

Cargo nets hold items like first aid kit, manuals, rain gear and safety items

### Integrated Sidewall Cargo Bin

Convenient storage for small tools and parts

### Lid Control Gas Spring

Eases lifting and prevents lid from slamming shut

### Recessed Handles

Prevent pinched fingers and damage to the handle

### EZ-Loader 4-Way Skid Bolsters

Allow fork lift loading from any side for quicker and easier transport



2-654990



## SITE-VAULT™ HEAVY DUTY CHESTS

- Site-Vault™ security system is a patented system with 3 locking points and a reflective orange lock indicator that shows when the box is locked
- Heavy-duty beveled edge lid eliminates sharp front lid corners and enhances lid strength
- Dual built-in lid storage with integrated cargo nets is perfect for gear and small tools
- EZ-Lock support arm secures and locks lid in open position for safe use
- Upgraded lock system now allows usage of padlock models Master #1, #5, #175 and American #50
- Integrated sidewall cargo bin provides convenient storage for small tools
- Ergonomic lifting handles are positioned inside deep recesses to prevent pinched knuckles and damage to handles
- Heavy-duty EZ-Loader 4-way skid bolsters allow fork lift loading from any side for quicker and easier transport
- Skid bolsters are compatible with casters (Part #1-320993, not included) for easy mobility
- Heavy-duty hinge is staked and welded to prevent the pin from being forced out for break in



| Cat. No. | Length | Width | Height   | Usable Cu. Ft. | App. Ship Wt. |
|----------|--------|-------|----------|----------------|---------------|
| 2-651990 | 30 in  | 20 in | 19.75 in | 5 ft³          | 60 lb         |
| 2-652990 | 36 in  | 20 in | 27.5 in  | 9 ft³          | 98 lb         |
| 2-653990 | 42 in  | 20 in | 27.5 in  | 10.5 ft³       | 118 lb        |
| 2-654990 | 48 in  | 24 in | 30.75 in | 16.7 ft³       | 148 lb        |
| 2-656990 | 48 in  | 30 in | 36.75 in | 25.6 ft³       | 190 lb        |
| 2-655990 | 60 in  | 24 in | 30.75 in | 21 ft³         | 182 lb        |
| 2-658990 | 72 in  | 24 in | 30.75 in | 25.3 ft³       | 203 lb        |

## SITE-VAULT™ HEAVY DUTY CHESTS WITH DRAWER



| Cat. No.   | Length | Width | Height    | Usable Cu. Ft. | App. Ship Wt. |
|------------|--------|-------|-----------|----------------|---------------|
| 2D-656990  | 48 in  | 30 in | 36.625 in | 20 ft³         | 200 lb        |
| 2DL-656990 | 48 in  | 30 in | 36.625 in | 20 ft³         | 225 lb        |

## SITE-VAULT™ HEAVY-DUTY CHEST REPLACEMENT PARTS



| Item No.   | Description                                  | Shock     | Lock Kit  | Elbow     |
|------------|----------------------------------------------|-----------|-----------|-----------|
| 2-651990   | 30 in Site-Vault™ Heavy-Duty Chest           | NO SHOCK  | 10319-165 | 10319-200 |
| 2-652990   | 36 in Site-Vault™ Heavy-Duty Chest           | NO SHOCK  | 10319-165 | 10319-200 |
| 2-653990   | 42 in Site-Vault™ Heavy-Duty Chest           | 10319-201 | 10319-165 | 10319-200 |
| 2-654990   | 48 in Site-Vault™ Heavy-Duty Chest           | 10159-85  | 10319-165 | 10314-03  |
| 2-656990   | 48 in Site-Vault™ Heavy-Duty Chest           | 10159-90  | 10319-165 | 10314-03  |
| 2-655990   | 60 in Site-Vault™ Heavy-Duty Chest           | 10159-91  | 10319-165 | 10319-214 |
| 2-658990   | 72 in Site-Vault™ Heavy-Duty Chest           | 10159-90  | 10319-165 | 10314-03  |
| 2D-656990  | 48 in Site-Vault™ Heavy-Duty Chest w/ Drawer | 10159-91  | 10319-165 | 10319-214 |
| 2DL-656990 | 48 in Site-Vault™ Heavy-Duty Chest w/ Drawer | 10159-92  | 10319-165 | 10319-200 |

## TRADESMAN STEEL CHESTS

- High-security design features enclosed dual lock system that resists saws, pry bars, and bolt cutters
- Grip-Rite™ lifting channel provides better grip on lid for easier and safer lid operation
- Rain-drain feature in padlock housing prevents water from collecting in box
- Ergonomic lifting handles are positioned inside deep recesses to prevent pinched knuckles and damage to handles
- EZ-Loader 4-way skid bolsters allow fork lift loading from any side for quicker and easier transport
- Skid bolsters are compatible with casters (Part #1-320993, not included) for easy mobility
- Heavy-duty hinge is staked and welded to prevent the pin from being forced out for break in
- Lid-control gas spring eases opening and closure of lid to prevent lid slamming



| Cat. No.  | Length | Width   | Height  | Usable Cu. Ft. | App. Ship Wt. |
|-----------|--------|---------|---------|----------------|---------------|
| CJB635990 | 36 in  | 19.5 in | 22 in   | 8.9 ft³        | 88 lb         |
| CJB636990 | 42 in  | 20 in   | 22 in   | 10.7 ft³       | 101 lb        |
| CJB637990 | 48 in  | 24 in   | 27.5 in | 18.3 ft³       | 140.5 lb      |
| CJB638990 | 60 in  | 24 in   | 27.5 in | 22.9 ft³       | 155 lb        |

Tough gets the job done.  
Smart gets the job done right.

## TRADESMAN STEEL CHEST REPLACEMENT PARTS



| Item No.  | Description                 | Lock Kit  | Elbow    |
|-----------|-----------------------------|-----------|----------|
| CJB635990 | 36 in Tradesman Steel Chest | 10318-410 | 10314-02 |
| CJB636990 | 42 in Tradesman Steel Chest | 10318-410 | 10314-04 |
| CJB637990 | 48 in Tradesman Steel Chest | 10318-410 | 10314-02 |
| CJB638990 | 60 in Tradesman Steel Chest | 10318-410 | 10314-04 |

CHESTS

## HIGH-CAPACITY DROP-FRONT CHEST

- Site-Vault™ security system with fully welded, bolt-cutter proof housing
- Full-length steel lock console with two locking points
- 44" wide low incline loading ramp with 8° loading angle
- Grip-Rite™ lifting channel for easier opening
- Full-length A-frame lid bolster
- Staked and welded hinge
- 1" locking arm
- Power cord access hole
- Recessed handles
- Lid lowering assist shock absorber



| Cat. No. | Length | Width | Height | Usable Cu. Ft. | App. Ship Wt. |
|----------|--------|-------|--------|----------------|---------------|
| 1-657990 | 60 in  | 31 in | 45 in  | 41.5 ft³       | 340 lb        |

## SLOPE LID CHEST

- Site-Vault™ security system with bolt-cutter proof housing
- Full-length steel lock console with three locking points
- Fully welded padlock housing
- Lid support rod props up lid for a flat working surface
- Grip-Rite™ lifting channel for easier opening
- Full-length A-frame lid bolster
- 1" locking arms
- Staked and welded hinge
- Lift-N-Stow hinged shelf to store bulky items in the bottom
- Recessed handles



| Cat. No. | Length | Width | Height  | Usable Cu. Ft. | App. Ship Wt. |
|----------|--------|-------|---------|----------------|---------------|
| 1-680990 | 60 in  | 30 in | 39.5 in | 32.7 ft³       | 243 lb        |

## CHEST REPLACEMENT PARTS



| Item No. | Description                    | Shock    | Lock Kit  | Elbow                                               |
|----------|--------------------------------|----------|-----------|-----------------------------------------------------|
| 1-680990 | Slope Lid Chest                | NO SHOCK | 10318-705 | 10318-846 Right Hand Side, 10318-847 Left Hand Side |
| 1-657990 | High-Capacity Drop-Front Chest | 10159-75 | 10318-705 | 10314-04                                            |

## WELDER'S BOX

- Cut-out for supply hose
- Compact and portable
- Staked and welded hinges
- Welded corner gussets
- 10-gauge latching hasp
- Wide lifting handles
- Textured powder paint finish



| Cat. No. | Length | Width | Height | Usable Cu. Ft.      | App. Ship Wt. |
|----------|--------|-------|--------|---------------------|---------------|
| 650990D  | 30 in  | 16 in | 12 in  | 3.3 ft <sup>3</sup> | 33 lb         |

## EMBEDDED LOCK SMALL CHEST

- Bolt cutter-proof lock housing
- Compact and portable
- Staked and welded hinges
- Welded corner gussets
- 10-gauge latching hasp
- Heavy-duty lifting handles
- Bottom bolsters for lift and support



| Cat. No. | Length | Width | Height  | Usable Cu. Ft.    | App. Ship Wt. |
|----------|--------|-------|---------|-------------------|---------------|
| 651990D  | 31 in  | 18 in | 15.5 in | 4 ft <sup>3</sup> | 70 lb         |



Tough gets the job done.  
Smart gets the job done right.

## SITE-VAULT™ PIANO BOXES

Tough gets the job done, smart gets the job done right.

With the perfect combination of storage of storage space, organization, and security, the world-renowned Crescent Piano Box solves real-world problems. Two storage bins on both side walls and the Lift-N-Stow™ Shelf give you room to store any item, while the Site-Vault™ security system ensures that your valuables remain safe and secure.



### Built-In Lid Storage

Easy access for hanging harnesses

### Top Shelf

Designed for 1,000 lb. capacity to hold chain hoists

### Ergonomic Lifting Handles

Positioned inside deep recesses to prevent pinched knuckles and damage to handles

### More Padlock Compatibility

Use Master #1, #5, #175, and American 50

### Site-Vault™ Security System

The patented system has a full-length steel lock console with three locking points and fluorescent reflective orange tape that indicates chest is locked

### Sidewall Storage Locker

Can be padlocked for personal items

### Lift-N-Stow™ Shelf

Full-width shelf with 500 lb. capacity swings up to accommodate large items

### Heavy-Duty EZ-Loader 4-Way Skid Bolsters

Compatible with casters and allow fork lift loading from any side



2-682990-01

## SITE-VAULT™ HEAVY DUTY PIANO BOXES

- Site-Vault™ is a patented security system with 3 locking points and a reflective orange lock indicator that shows when the box is locked
- Heavy-duty beveled edge lid eliminates sharp front lid corners and enhances lid strength
- Built-in door storage with hooks and cargo nets for storing harnesses, jackets, etc
- Upgraded lock system now allows usage of padlock models Master #1, #5, #175 and American #50
- Integrated sidewall storage locker can be padlocked for personal items
- Ergonomic lifting handles are positioned inside deep recesses to prevent pinched knuckles and damage to handles
- Heavy-duty EZ-Loader 4-way skid bolsters allow forklift loading from any side
- Skid bolsters are compatible with casters (Part #1-320993, not included)
- High-strength top shelf is rated to hold 1,000 pounds
- Rigid 4" formed sidewalls resist wind-driven rain and pry bar break-in for long term durability



| Cat. No.    | Length  | Width | Height | Usable Cu. Ft. | App. Ship Wt. |
|-------------|---------|-------|--------|----------------|---------------|
| 2-681990-01 | 47.9 in | 31 in | 51 in  | 39.1 ft³       | 298 lb        |
| 2-688990-01 | 60 in   | 31 in | 39 in  | 36.5 ft³       | 279.000 lb    |
| 2-682990-01 | 60 in   | 31 in | 51 in  | 48.9 ft³       | 354.000 lb    |
| 2-683990-01 | 60 in   | 31 in | 51 in  | 48.9 ft³       | 380.000 lb    |
| 2-689990-01 | 74 in   | 31 in | 51 in  | 60. ft³        | 413.000 lb    |
| 2-684990-01 | 74 in   | 31 in | 51 in  | 60.3 ft³       | 437.500 lb    |
| 2-685990-01 | 74 in   | 35 in | 64 in  | 87.4 ft³       | 520.000 lb    |

## SITE-VAULT™ HEAVY DUTY PIANO BOXES WITH DRAWER



| Cat. No.  | Length | Width    | Height   | Usable Cu. Ft. | App. Ship Wt. |
|-----------|--------|----------|----------|----------------|---------------|
| 2D-681990 | 48 in  | 31.15 in | 56.78 in | 44.45 ft³      | 450 lb        |
| 2D-682990 | 60 in  | 30.75 in | 56.78 in | 20 ft³         | 580 lb        |

Tough gets the job done.  
Smart gets the job done right.

## HEAVY DUTY PIANO BOX

- Two gas springs assist with opening and closing the door
- Ergonomic lifting handles are positioned inside deep recesses to prevent pinched knuckles and damage to handles
- Tall bottom bolsters for easily moving a loaded piano box with a forklift
- Rain-drain feature in padlock housing prevents water from collecting in box
- High-security design features enclosed dual lock system that resists saws, pry bars, and bolt cutters



| Cat. No. | Length | Width   | Height   | Usable Cu. Ft.     | App. Ship Wt. |
|----------|--------|---------|----------|--------------------|---------------|
| 640990   | 60 in  | 30.5 in | 49.88 in | 48 ft <sup>3</sup> | 308 lb        |

## SITE-VAULT™ PIANO BOX REPLACEMENT PARTS



| Item No.    | Description                                        | Shock    | Lock Kit  | Cable   |
|-------------|----------------------------------------------------|----------|-----------|---------|
| 2-681990-01 | 48 in Site-Vault™ Heavy-Duty Piano Box             | 10159-88 | 10319-165 | 10109-8 |
| 2-682990-01 | 60 in Site-Vault™ Heavy-Duty Piano Box             | 10159-88 | 10319-165 | 10109-8 |
| 2-683990-01 | 60 in Site-Vault™ Heavy-Duty Piano Box             | 10159-88 | 10319-165 | 10109-8 |
| 2-684990-01 | 74 in Site-Vault™ Heavy-Duty Piano Box             | 10159-87 | 10319-165 | 10109-8 |
| 2-685990-01 | 74 in Site-Vault™ Heavy-Duty Piano Box             | 10159-78 | 10319-165 | 10109-8 |
| 2-688990-01 | 60 in Site-Vault™ Heavy-Duty Piano Box             | 10159-88 | 10319-165 | 10109-8 |
| 2-689990-01 | 74 in Site-Vault™ Heavy-Duty Piano Box             | 10159-87 | 10319-165 | 10109-8 |
| 2D-681990   | 48 in Site-Vault™ Heavy-Duty Piano Box with Drawer | 10159-88 | 10319-165 | 10109-8 |
| 2D-682990   | 60 in Site-Vault™ Heavy-Duty Piano Box with Drawer | 10159-88 | 10319-165 | 10109-8 |

## FIELD OFFICE

- Large lockable desktop can be raised to make a flat working surface
- Beveled sidewalls for enhanced weather resistance and security
- Steel pegboard
- 30 cubic foot storage locker
- Rain gutters
- Upper door safety bar support with locking pin
- Stainless steel door hinges resist rust
- EZ-Loader® skid bolsters
- One handle lock
- Storage area for plans and binders on side wall



| Cat. No. | Length | Width | Height | Usable Cu. Ft. | App. Ship Wt. |
|----------|--------|-------|--------|----------------|---------------|
| 1-674990 | 63 in  | 42 in | 80 in  | 100 ft³        | 660 lb        |

## MOBILE FIELD OFFICE

- Full size desk, easily handles size "E" prints
- 11 built-in bins for organization while on the job
- Removable upper shelf opens the rear wall to add a monitor
- Extreme mobility for convenience on the job; roll it (through 36" doors), telehandle it, or hoist it
- Perfect desk height for comfort while working
- Slide-out bottom shelf for easy access to items



| Cat. No. | Length | Width | Height | Usable Cu. Ft. | App. Ship Wt. |
|----------|--------|-------|--------|----------------|---------------|
| 1-510990 | 63 in  | 33 in | 80 in  | 61 ft³         | 581 lb        |

## TRADESMAN FIELD OFFICE

- Large lockable desktop can be raised to make a flat working surface
- Built-in sidewall bins
- Upper door safety bar support with locking pin
- Full 42" deep bottom shelf
- Full door weather stripping
- EZ-Loader® 4-way skid bolsters
- One handle lock
- Lid lowering assist shock absorber
- EZ-Loader® skid bolsters
- Formed-in reinforcements strengthen skid bolsters



| Cat. No. | Length | Width | Height | Usable Cu. Ft. | App. Ship Wt. |
|----------|--------|-------|--------|----------------|---------------|
| 1-669990 | 63 in  | 42 in | 79 in  | 99.6 ft³       | 604 lb        |

Tough gets the job done.  
Smart gets the job done right.

# CRESCENT MESH CABINETS

You're the know, this is the how.

Our mesh cabinets provides convenient storage in a highly visible manner. The cabinets easily fit through standard, commercial doorways allowing tools kept inside to be brought through any jobsite or factory.



### Solid Steel Cabinet Top & Bottom Shelf

Increases strength and prevents items from snagging or falling through

### Commercial Duty 3-Point Lock

Secures doors at top, bottom and center

### Rear Shelf Lip

Helps prevent items from falling backwards



### Removable Shelves

Slide easily even when fully loaded up to 200 lbs.

### Rugged 13 Gauge Steel Mesh

For maximum security and visibility

### Flat Bottom Shelf

For easy loading and unloading



1-402990



## MESH CABINETS

- Removable shelves can be adjusted to multiple positions for maximum storage flexibility
- Sliding shelves provide easy access even when loaded to the maximum capacity of 200 lbs
- Built-in door shelves provide convenient highly visible storage
- Solid top and bottom construction to prevent items from falling through mesh
- Flat bottom shelf with no lip allows easy loading and unloading of heavy items
- White shelving provides high visibility in the cabinet
- Rugged 3 point locking system and continuous door hinges provide long term durability
- Conveniently fits through a standard 3' commercial doorway
- Push handle and shelf provide convenient storage for a step ladder, shelf can hold up to 200 lbs



| Cat. No. | Length   | Width | Height   | Usable Cu. Ft.        | App. Ship Wt. |
|----------|----------|-------|----------|-----------------------|---------------|
| 1-402990 | 42.5 in  | 33 in | 51.25 in | 40 ft <sup>3</sup>    | 215 lb        |
| 1-401990 | 59.25 in | 33 in | 55 in    | 60.46 ft <sup>3</sup> | 328 lb        |
| 1-400990 | 75 in    | 33 in | 55 in    | 76.96 ft <sup>3</sup> | 375 lb        |

## MESH CABINET REPLACEMENT SHELVES



| Item No. | Description                    | Shelf Part No. |
|----------|--------------------------------|----------------|
| 1-402990 | Removable White Shelf 42.5 in  | 14000033       |
| 1-401990 | Removable White Shelf 59.25 in | 14010033       |
| 1-400990 | Removable White Shelf 75 in    | 14000033       |
| 1-403990 | Removable White Shelf 75 in    | 14000033       |

—|—  
Tough gets the job done.  
Smart gets the job done right.  
—|—

## HEAVY-DUTY CABINETS

- Nearly 17 linear feet of door shelf storage
- Three 5/8" steel locking pins per door
- Welded corner gussets
- Three heavy-duty lock hooks per door
- EZ-Loader® skid bolsters
- Access holes for electrical cables
- Staked and welded hinge
- Stainless steel door hinges resist rust
- Hand or foot operated door latch release system
- Grip-Rite™ lifting channel



| Cat. No. | Description            | Length    | Width    | Height   | Usable Cu. Ft. | App. Ship Wt. |
|----------|------------------------|-----------|----------|----------|----------------|---------------|
| 1-698990 | Two Doors              | 60.125 in | 30.25 in | 60.75 in | 58.7 ft³       | 436 lb        |
| 1-694990 | Two Doors              | 60.750 in | 24.25 in | 60.25 in | 47.5 ft³       | 379 lb        |
| 1-697990 | Two Doors, Open Side   | 60.125 in | 24.25 in | 60.75 in | 47.5 ft³       | 366 lb        |
| 1-695990 | Four Doors, Both Sides | 60.125 in | 32.25 in | 60.75 in | 63.7 ft³       | 523 lb        |

## EXTRA HEAVY-DUTY BIN CABINET

- Over 40' of shelving built into doors for smaller items
- Heavy-duty galvanized movable bin dividers
- Dividers can be moved in 2" increments or removed to create various size bins
- Divider assembly required
- Center EZ-Loader® skid bolster
- Formed-in reinforcements strengthen skid bolsters
- 7-gauge, one-piece steel bolsters with holes to install optional casters
- Access holes for electrical cables
- Staked and welded hinges
- Hand or foot operated door latch release system



| Cat. No. | Description | Length | Width | Height | Usable Cu. Ft. | App. Ship Wt. |
|----------|-------------|--------|-------|--------|----------------|---------------|
| 1-693990 | Two Doors   | 72 in  | 24 in | 61 in  | 49 ft³         | 522 lb        |

## ROLLING CLAM SHELL CABINET

- Eight 4" heavy-duty casters open and close cabinet
- Hinge stop prevents cabinet from fully opening and reduces tipping
- High center handles for opening, closing, and moving cabinet
- 10-gauge latching hasp
- Rugged 16-gauge steel construction
- Moveable top and bottom shelves
- Open storage closet for tall items
- Lockable storage locker inside cabinet
- Only key entry area of padlock is exposed



| Cat. No. | Length   | Width | Height  | Usable Cu. Ft. | App. Ship Wt. |
|----------|----------|-------|---------|----------------|---------------|
| 692990   | 62.25 in | 30 in | 63.5 in | 58 ft³         | 472 lb        |

## ROLLING WORK BENCHES

- Fully adjustable interiors for maximum storage flexibility
- Heavy-duty 18-gauge steel drawers with 75 lb. capacity
- Ball bearing glides on drawers
- 4 heavy-duty casters; 2 fixed and 2 locking swivel
- Staked and welded hinges
- Welded corner gussets



| Cat. No. | Length    | Width     | Height    | Usable Cu. Ft. | App. Ship Wt. |
|----------|-----------|-----------|-----------|----------------|---------------|
| 675990   | 43.375 in | 26.875 in | 38.5 in   | 21.7 ft³       | 267 lb        |
| 675996   | 43.375 in | 26.875 in | 40.5 in   | 21.7 ft³       | 280 lb        |
| 676990   | 43.375 in | 26.875 in | 38.5 in   | 21.7 ft³       | 294 lb        |
| 676996   | 43.375 in | 26.875 in | 40.5 in   | 21.7 ft³       | 307 lb        |
| 677990   | 49.375 in | 26.875 in | 40.625 in | 24.6 ft³       | 264 lb        |
| 678990   | 49.375 in | 26.875 in | 40.625 in | 24.6 ft³       | 342 lb        |

## DRAWER CABINET

- Drawers fully extend for easy access
- Hand or foot operated door latch release system
- Site-Vault™ security system with fully welded padlock housing
- EZ-Loader® skid bolsters allow for forklift access from all sides
- Welded corner gussets
- Access holes for electrical cables
- 4.5" deep top shelf and three 3" deep shelves on each door
- Recessed handles
- 2.5" drawers: 75-lb. load capacity; 5.5" drawers: 125-lb. load capacity



| Cat. No. | Length | Width | Height     | Usable Cu. Ft. | App. Ship Wt. |
|----------|--------|-------|------------|----------------|---------------|
| 1-679990 | 60     | 30 in | 60.8125 in | 58.7 ft³       | 610 lb        |



Tough gets the job done.  
Smart gets the job done right.

## REPLACEMENT PARTS FOR MODELS 675, 676, 677 & 678

- Replacement Parts for Models 675, 676, 677 & 678
- Powder paint



CROSSOVERS

| Cat. No. | Description              | Length    | Width     | Height | Works With       | Product Weight |
|----------|--------------------------|-----------|-----------|--------|------------------|----------------|
| 608990   | Shelf                    | 21.875 in | 16.875 in | 1.6 in | Models 677 & 678 | 8.000 lb       |
| 605990   | 2-1/2" Deep Drawer       | 21.875 in | 16.875 in | 2.5 in | Models 675 & 676 | 16.000 lb      |
| 609990   | 2-1/2" Deep Drawer       | 21.875 in | 16.875 in | 2.5 in | Models 677 & 678 | 17.000 lb      |
| 606990   | 4-1/2" Deep Drawer       | 21.875 in | 16.875 in | 4.5 in | Models 675 & 676 | 19.000 lb      |
| 610990   | 4-1/2" Deep Drawer       | 21.875 in | 16.875 in | 4.5 in | Models 677 & 678 | 18.100 lb      |
| 607990   | 5-1/2" Deep Drawer       | 21.875 in | 16.875 in | 5.5 in | Models 675 & 676 | 19.000 lb      |
| 611990   | 5-1/2" Deep Drawer       | 21.875 in | 16.875 in | 5.5 in | Models 677 & 678 | 21.000 lb      |
| 616990   | 10" Deep Drawer          | 21.875 in | 16.875 in | 10 in  | Models 675 & 676 | 17.800 lb      |
| 617990   | 10" Deep Drawer          | 21.875 in | 16.875 in | 10 in  | Models 677 & 678 | 19.300 lb      |
| 612990   | Optional 2nd Push Handle | 21.875 in | 16.875 in | 2.0 in | Models 675 & 676 | 2.000 lb       |

## PUSH-BUTTON PREMIUM GEAR-LOCK™ SINGLE LID ALUMINUM CROSSOVERS

- Gear-Lock™ self adjusting dual rotary lock system always latches and closes for superior security
- Self-aligning latch pins pivot from side to side and lock the lid into Gear-Lock™ latch for premium security
- High-strength body and full-width lock console resist cargo damage and protect the locking mechanism
- RSL™ laminated rigid structural lid bolster for superior strength
- Tough Armor-Brite® powder paint finish has superior rust resistance
- Self rising lids with dual gas spring lid lifts for easy access
- 4-compartment storage tray assists with organization
- Built in storage bins on both ends for convenient small item storage
- Wide top box flanges provide extra strength and durability
- Lid locks from drivers side but can be opened from either side of vehicle



| Cat. No.   | Color  | Size                | A         | B         | C         | D         | E        | F         | G     | Usable Cu. Ft. | App. Ship Wt. |
|------------|--------|---------------------|-----------|-----------|-----------|-----------|----------|-----------|-------|----------------|---------------|
| PAC1580000 | Bright | Fullsize            | 70.125 in | 60.125 in | 14.25 in  | 9 in      | 20.25 in | 20.88     | 71 in | 9.2 ft³        | 76.5 lb       |
| PAC1580002 | Black  | Fullsize            | 70.125 in | 60.125 in | 14.25 in  | 9 in      | 20.25 in | 20.875 in | 71 in | 9.2 ft³        | 76.5 lb       |
| PAC1582000 | Bright | Deep Fullsize       | 70.125 in | 60.125 in | 17.25 in  | 12 in     | 20.25 in | 20.88     | 71 in | 11.3 ft³       | 80.0 lb       |
| PAC1582002 | Black  | Deep Fullsize       | 70.125 in | 60.125 in | 17.25 in  | 12 in     | 20.25 in | 20.875 in | 71 in | 11.3 ft³       | 80.0 lb       |
| PAC1585000 | Bright | Super Deep Fullsize | 70.125 in | 60.125 in | 19.875 in | 14.625 in | 20.25 in | 21 in     | 71 in | 13 ft³         | 83.0 lb       |
| PAC1585002 | Black  | Super Deep Fullsize | 70.125 in | 60.125 in | 19.875 in | 14.625 in | 20.25 in | 21 in     | 71 in | 13 ft³         | 83.0 lb       |
| PAC1587000 | Bright | Compact             | 60.125 in | 50.125 in | 11-1/4 in | 6 in      | 20.25 in | 20.875 in | 61 in | 6.1 ft³        | 69.0 lb       |

## LOW-PROFILE GEAR-LOCK™ SINGLE LID ALUMINUM CROSSOVERS

- Gear-Lock™ self adjusting dual rotary lock system always latches and closes for superior security
- Self-aligning latch pins pivot from side to side and lock the lid into Gear-Lock™ latch for premium security
- High-strength body and full-width lock console resist cargo damage and protect the locking mechanism
- RSL™ laminated rigid structural lid bolster for superior strength
- Tough Armor-Brite® powder paint finish has superior rust resistance
- Self rising lids with dual gas spring lid lifts for easy access
- 4-compartment storage tray assists with organization
- Built in storage bins on both ends for convenient small item storage
- Wide top box flanges provide extra strength and durability
- Lid locks from drivers side but can be opened from either side of vehicle



| Cat. No.   | Color  | Size     | A     | B        | C         | D         | E         | F     | G         | Usable Cu. Ft. | App. Ship Wt. |
|------------|--------|----------|-------|----------|-----------|-----------|-----------|-------|-----------|----------------|---------------|
| PAC1357000 | Bright | Fullsize | 70 in | 60.25 in | 15.125 in | 12.125 in | 17.875 in | 21 in | 71.125 in | 9.1 ft³        | 76.5 lb       |
| PAC1357002 | Black  | Fullsize | 70 in | 60.25 in | 15.125 in | 12.125 in | 17.875 in | 21 in | 71.125 in | 9.1 ft³        | 76.5 lb       |

## MID-LID GEAR-LOCK™ PUSH BUTTON ALUMINUM CROSSOVERS

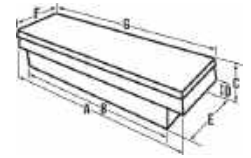
- Gear-Lock™ self adjusting dual rotary lock system always latches and closes for superior security
- Self-aligning latch pins pivot from side to side and lock the lid into Gear-Lock™ latch for premium security
- High-strength body and full-width lock console resist cargo damage and protect the locking mechanism
- RSL™ laminated rigid structural lid bolster for superior strength
- Tough Armor-Brite® powder paint finish has superior rust resistance
- Self rising lids with dual gas spring lid lifts for easy access
- 4-compartment storage tray assists with organization
- Built in storage bins on both ends for convenient small item storage
- Wide top box flanges provide extra strength and durability
- Lid locks from drivers side but can be opened from either side of vehicle



| Cat. No.   | Color  | Size     | A         | B         | C        | D    | E        | F         | G         | Usable Cu. Ft. | App. Ship Wt. |
|------------|--------|----------|-----------|-----------|----------|------|----------|-----------|-----------|----------------|---------------|
| PAC1596000 | Bright | Fullsize | 70.125 in | 60.125 in | 14.25 in | 9 in | 20.25 in | 20.875 in | 71 in     | 9.2 ft³        | 62.5 lb       |
| PAC1596002 | Black  | Fullsize | 70.125 in | 60.125 in | 14.25 in | 9 in | 20.25 in | 20.875 in | 71 in     | 9.2 ft³        | 62.5 lb       |
| PAC1598000 | Bright | Fullsize | 70.125 in | 60.125 in | 14.25 in | 9 in | 20.25 in | 21 in     | 71.875 in | 9.2 ft³        | 62.5 lb       |

## GEAR-LOCK™ ALUMINUM SINGLE LID DEEP SUPER-DUTY & FULLSIZE DEEP CROSSOVER

- Gear-Lock™ end-mounted push button locks ratchet lid tightly closed for superior security
- Self-aligning latch pins pivot from side to side and lock the lid into Gear-Lock™ latch for premium security
- High-strength body and full-width lock console resist cargo damage and protect the locking mechanism
- RSL™ laminated rigid structural lid bolster for superior strength
- Tough Armor-Brite® powder paint finish has superior rust resistance
- Self rising lids with dual gas spring lid lifts for easy access
- 4-compartment storage tray assists with organization
- Built in storage bins on both ends for convenient small item storage
- Wide top box flanges provide extra strength and durability



| Cat. No. | Color  | Size                            | A         | B        | C     | D     | E        | F     | G         | Usable Cu. Ft. | App. Ship Wt. |
|----------|--------|---------------------------------|-----------|----------|-------|-------|----------|-------|-----------|----------------|---------------|
| 1701000  | Bright | Deep Super Duty & Fullsize Deep | 71.125 in | 58.75 in | 18 in | 12 in | 20.25 in | 21 in | 72.125 in | 11.9 ft³       | 77.0 lb       |

## GEAR-LOCK™ PADDLE HANDLE SINGLE LID CROSSOVERS

- RSL™ laminated rigid structural lid bolster for superior strength
- Self-aligning hoop lid strikers lock the lid down tight for improved security
- High-strength body design resists cargo damage and protects the locking mechanism
- Gear-Lock™ latches ratchet lid tightly closed for superior security
- Wide stainless steel paddle handles resist corrosion
- Self rising lids with dual gas spring lid lifts for easy access
- Small parts storage tray for organization
- Built in storage bins on both ends for convenient small item storage
- Wide top box flanges provide extra strength and durability
- Lid locks from drivers side but can be opened from either side of vehicle



| Cat. No. | Color  | Size                  | A     | B     | C        | D         | E        | F     | G     | Usable Cu. Ft. | App. Ship Wt. |
|----------|--------|-----------------------|-------|-------|----------|-----------|----------|-------|-------|----------------|---------------|
| 1-351000 | Bright | Full Size Low Profile | 69 in | 59 in | 14.25 in | 12.125 in | 20.25 in | 21 in | 70 in | 9 ft³          | 56.0 lb       |
| 1-351002 | Black  | Full Size Low Profile | 69 in | 59 in | 14.25 in | 12.125 in | 20.25 in | 21 in | 70 in | 9 ft³          | 56.0 lb       |
| 1-232000 | Bright | Full Size             | 69 in | 59 in | 14.25 in | 9 in      | 20.25 in | 21 in | 70 in | 9.2 ft³        | 50.5 lb       |
| 1-232002 | Black  | Full Size             | 69 in | 59 in | 14.25 in | 9 in      | 20.25 in | 21 in | 70 in | 9.2 ft³        | 50.5 lb       |
| 1-238000 | Bright | Full Size Mid-Lid     | 69 in | 59 in | 14.25 in | 9 in      | 20.25 in | 21 in | 70 in | 9.2 ft³        | 52.5 lb       |

## GEAR-LOCK™ PUSH BUTTON SINGLE LID STEEL CROSSOVERS

- Gear-Lock™ self adjusting dual rotary lock system always latches and closes for superior security
- Self-aligning latch pins pivot from side to side and lock the lid into Gear-Lock™ latch for premium security
- High-strength, self-rising lids will resist attempted break-ins better than other steel lids
- High-strength body design resists cargo damage and protects the locking mechanism
- End-mounted push buttons provide easy access
- Heavy-duty guards protect the gas springs and extend long term durability
- Built-in storage bins on both ends and 4-compartment sliding tray for small item storage
- Tough Armor-Brite® powder paint finish has superior rust resistance



| Cat. No.   | Color | Size            | A         | B         | C        | D     | E        | F         | G     | Usable Cu. Ft. | App. Ship Wt. |
|------------|-------|-----------------|-----------|-----------|----------|-------|----------|-----------|-------|----------------|---------------|
| PSC1458000 | White | Compact         | 60.125 in | 50.125 in | 11.25 in | 6 in  | 20.25 in | 20.875 in | 61 in | 6.1 ft³        | 77.0 lb       |
| PSC1455000 | White | Fullsize        | 70.125 in | 60.125 in | 14.25 in | 9 in  | 20.25 in | 20.875 in | 71 in | 9.2 ft³        | 94.0 lb       |
| PSC1456000 | White | Extra-Wide Deep | 70.125 in | 60.125 in | 17.25 in | 12 in | 20.25 in | 20.875 in | 71 in | 11.3 ft³       | 101.0 lb      |

## GULL WING GEAR-LOCK™ PUSH BUTTON STEEL CROSSOVERS

- Gear-Lock™ self adjusting dual rotary lock system always latches and closes for superior security
- Self-aligning latch pins pivot from side to side and lock the lid into Gear-Lock™ latch for premium security
- High-strength, self-rising lids will resist attempted break-ins better than other steel lids
- High-strength body design resists cargo damage and protects the locking mechanism
- End-mounted push buttons provide easy access
- Heavy-duty guards protect the gas springs and extend long term durability
- Built-in storage bins on both ends and 4-compartment sliding tray for small item storage



| Cat. No.   | Color | Size          | A         | B         | C        | D     | E        | F         | G     | Usable Cu. Ft. | App. Ship Wt. |
|------------|-------|---------------|-----------|-----------|----------|-------|----------|-----------|-------|----------------|---------------|
| PSC1460000 | White | Fullsize      | 70.125 in | 60.125 in | 14.25 in | 9 in  | 20.25 in | 20.875 in | 71 in | 9.2 ft³        | 85.0 lb       |
| PSC1461000 | White | Deep Fullsize | 70.125 in | 60.125 in | 17.25 in | 12 in | 20.25 in | 20.875 in | 71 in | 11.3 ft³       | 93.0 lb       |

Tough gets the job done.  
Smart gets the job done right.

## RSL™ SINGLE LID PADDLE HANDLE ALUMINUM CROSSOVERS

- Lid reinforced with RSL™ rigid structural lid bolster for superior strength
- Adjustable lid strikers keep the lid locked down tight for improved security
- High-strength body design resists cargo damage and protects the locking mechanism
- Leak proof stainless steel paddle handles prevent moisture from entering
- Self rising lids with dual gas spring lid lifts for easy access
- Small parts storage tray for organization
- Built in storage bins on both ends for convenient small item storage
- Lid locks from drivers side but can be opened from either side of vehicle



CROSSOVERS

| Cat. No. | Color  | Size          | A         | B         | C        | D     | E     | F        | G       | Usable Cu. Ft. | App. Ship Wt. |
|----------|--------|---------------|-----------|-----------|----------|-------|-------|----------|---------|----------------|---------------|
| 1-304000 | Bright | Mid-Size      | 62.75 in  | 50.5 in   | 14.25 in | 9 in  | 17 in | 20.25 in | 63.5 in | 7.9 ft³        | 36.0 lb       |
| 1-304002 | Black  | Mid-Size      | 62.75 in  | 50.5 in   | 14.25 in | 9 in  | 17 in | 20.25 in | 63.5 in | 7.9 ft³        | 36.0 lb       |
| 1-300000 | Bright | Fullsize      | 69.125 in | 59.125 in | 14.25 in | 9 in  | 17 in | 20.25 in | 70 in   | 9.3 ft³        | 36.0 lb       |
| 1-300002 | Black  | Fullsize      | 69.125 in | 59.125 in | 14.25 in | 9 in  | 17 in | 20.25 in | 70 in   | 9.3 ft³        | 36.0 lb       |
| 1-301000 | Bright | Deep Fullsize | 69.125 in | 59.125 in | 17.25 in | 12 in | 17 in | 20.25 in | 70 in   | 11 ft³         | 45.5 lb       |
| 1-301002 | Black  | Deep Fullsize | 69.125 in | 59.125 in | 17.25 in | 12 in | 17 in | 20.25 in | 70 in   | 11 ft³         | 45.5 lb       |

## LOW-PROFILE, RSL™ SINGLE LID PADDLE HANDLE ALUMINUM CROSSOVERS

- Lid reinforced with RSL™ rigid structural lid bolster for superior strength
- Adjustable lid strikers keep the lid locked down tight for improved security
- High-strength body design resists cargo damage and protects the locking mechanism
- Leak proof stainless steel paddle handles prevent moisture from entering
- Self rising lids with dual gas spring lid lifts for easy access
- Small parts storage tray for organization
- Built in storage bins on both ends for convenient small item storage
- Lid locks from drivers side but can be opened from either side of vehicle



| Cat. No. | Color  | Size     | A         | B         | C        | D         | E     | F        | G       | Usable Cu. Ft. | App. Ship Wt. |
|----------|--------|----------|-----------|-----------|----------|-----------|-------|----------|---------|----------------|---------------|
| 1-310000 | Bright | Mid-Size | 62.75 in  | 50.5 in   | 14.25 in | 11.812 in | 17 in | 20.25 in | 63.5 in | 7 ft³          | 36.0 lb       |
| 1-302000 | Bright | Fullsize | 69.125 in | 59.125 in | 14.25 in | 11.812 in | 17 in | 20.25 in | 70 in   | 8.8 ft³        | 37.0 lb       |
| 1-302002 | Black  | Fullsize | 69.125 in | 59.125 in | 14.25 in | 11.812 in | 17 in | 20.25 in | 70 in   | 8.8 ft³        | 37.0 lb       |

## MID-LID RSL™ ALUMINUM CROSSOVERS

- Lid reinforced with RSL™ rigid structural lid bolster for superior strength
- Adjustable lid strikers keep the lid locked down tight for improved security
- High-strength body design resists cargo damage and protects the locking mechanism
- Leak proof stainless steel paddle handles prevent moisture from entering
- Self rising lids with dual gas spring lid lifts for easy access
- Small parts storage tray for organization
- Built in storage bins on both ends for convenient small item storage
- Lid locks from drivers side but can be opened from either side of vehicle



| Cat. No. | Color  | Size     | A         | B         | C        | D    | E     | F        | G     | Usable Cu. Ft. | App. Ship Wt. |
|----------|--------|----------|-----------|-----------|----------|------|-------|----------|-------|----------------|---------------|
| 1-306000 | Bright | Fullsize | 69.125 in | 59.125 in | 14.25 in | 9 in | 17 in | 20.25 in | 70 in | 9.3 ft³        | 37.0 lb       |
| 1-306002 | Black  | Fullsize | 69.125 in | 59.125 in | 14.25 in | 9 in | 17 in | 20.25 in | 70 in | 9.3 ft³        | 37.0 lb       |

## SLIMLINE SINGLE LID ALUMINUM CROSSOVERS

- Lid reinforced with RSL™ rigid structural lid bolster for superior strength
- Adjustable lid strikers keep the lid locked down tight for improved security
- High-strength body design resists cargo damage and protects locking mechanism
- Leak proof stainless steel paddle handles prevent moisture from entering
- Self rising lids with dual gas spring lid lifts for easy access
- Small parts storage tray for organization
- Built in storage bins on both ends for convenient small item storage
- Lid locks from drivers side but can be opened from either side of vehicle



| Cat. No. | Color  | Size     | A         | B         | C     | D        | E         | F       | G     | Usable Cu. Ft. | App. Ship Wt. |
|----------|--------|----------|-----------|-----------|-------|----------|-----------|---------|-------|----------------|---------------|
| 1-311000 | Bright | Fullsize | 69.125 in | 59-1/8 in | 16 in | 10.75 in | 10.375 in | 13.5 in | 70 in | 6.5 ft³        | 33.5 lb       |
| 1-311002 | Black  | Fullsize | 69.125 in | 59-1/8 in | 16 in | 10.75 in | 10.375 in | 13.5 in | 70 in | 6.5 ft³        | 33.5 lb       |

Tough gets the job done.  
Smart gets the job done right.

## HYBRID SINGLE LID CROSSOVER

- Durable steel box construction with durable powdercoat finish and non-rusting aluminum treadplate lid
- High-strength body design resists cargo damage and protects locking mechanism
- Adjustable lid strikers keep the lid locked down tight for improved security
- Heavy-duty gas springs for easy access
- Leak proof stainless steel paddle handles prevent moisture from entering
- Weathertight seal forms from compressed foam gasket



CROSSOVERS

| Cat. No.   | Color | Size     | A          | B     | C        | D        | E          | F         | G         | Usable Cu. Ft.       | App. Ship Wt. |
|------------|-------|----------|------------|-------|----------|----------|------------|-----------|-----------|----------------------|---------------|
| DHC1450000 | Black | Fullsize | 70.1875 in | 60 in | 13.72 in | 11.07 in | 20.0625 in | 20.843 in | 71.062 in | 10.3 ft <sup>3</sup> | 56 lb         |

## CROSSOVER REPLACEMENT SHOCKS



| Cat. No.   | Description                                                      | Shock    |
|------------|------------------------------------------------------------------|----------|
| 1-304000   | RSL™ Single Lid Paddle Handle Aluminum Crossover                 | 10159-49 |
| 1-304002   | RSL™ Single Lid Paddle Handle Aluminum Crossover                 | 10159-49 |
| 1-300000   | RSL™ Single Lid Paddle Handle Aluminum Crossover                 | 10159-68 |
| 1-300002   | RSL™ Single Lid Paddle Handle Aluminum Crossover                 | 10159-68 |
| 1-301000   | RSL™ Single Lid Paddle Handle Aluminum Crossover                 | 10159-68 |
| 1-301002   | RSL™ Single Lid Paddle Handle Aluminum Crossover                 | 10159-68 |
| 1-306000   | Mid-Lid RSL™ Aluminum Crossover                                  | 10159-70 |
| 1-306002   | Mid-Lid RSL™ Aluminum Crossover                                  | 10159-70 |
| 1-310000   | Low-Profile, RSL™ Single Lid Paddle Handle Aluminum Crossover    | 10159-49 |
| 1-310002   | Low-Profile, RSL™ Single Lid Paddle Handle Aluminum Crossover    | 10159-49 |
| 1-302000   | Low-Profile, RSL™ Single Lid Paddle Handle Aluminum Crossover    | 10159-68 |
| 1-302002   | Low-Profile, RSL™ Single Lid Paddle Handle Aluminum Crossover    | 10159-68 |
| 1-311000   | Slimline Single Lid Aluminum Crossover                           | 10159-49 |
| 1-311002   | Slimline Single Lid Aluminum Crossover                           | 10159-49 |
| 1-351000   | Gear-Lock™ Paddle Handle Single Lid Crossover                    | 10159-68 |
| 1-351002   | Gear-Lock™ Paddle Handle Single Lid Crossover                    | 10159-68 |
| 1-232000   | Gear-Lock™ Paddle Handle Single Lid Crossover                    | 10159-68 |
| 1-232002   | Gear-Lock™ Paddle Handle Single Lid Crossover                    | 10159-68 |
| 1-238000   | Gear-Lock™ Paddle Handle Single Lid Crossover                    | 10159-70 |
| 1-238002   | Gear-Lock™ Paddle Handle Single Lid Crossover                    | 10159-70 |
| DHC1450000 | Hybrid Single Lid Crossover                                      | 10159-01 |
| PAC1357000 | Low-Profile Push Button Gear-Lock™ Single Lid Aluminum Crossover | 10159-56 |
| PAC1357002 | Low-Profile Push Button Gear-Lock™ Single Lid Aluminum Crossover | 10159-56 |
| PAC1580000 | Push-Button Premium Gear-Lock™ Single Lid Aluminum Crossover     | 10159-56 |
| PAC1580002 | Push-Button Premium Gear-Lock™ Single Lid Aluminum Crossover     | 10159-56 |

[Continued on next page]

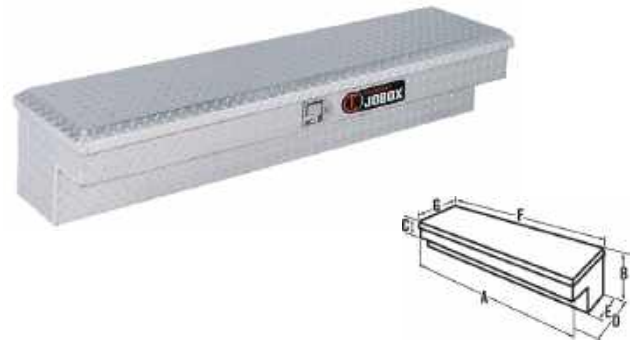
## CROSSOVER REPLACEMENT SHOCKS *(Continued on next page)*

| Cat. No.   | Description                                                  | Shock    |
|------------|--------------------------------------------------------------|----------|
| PAC1582000 | Push-Button Premium Gear-Lock™ Single Lid Aluminum Crossover | 10159-56 |
| PAC1582002 | Push-Button Premium Gear-Lock™ Single Lid Aluminum Crossover | 10159-56 |
| PAC1585000 | Push-Button Premium Gear-Lock™ Single Lid Aluminum Crossover | 10159-56 |
| PAC1585002 | Push-Button Premium Gear-Lock™ Single Lid Aluminum Crossover | 10159-56 |
| PAC1596000 | Mid-Lid Gear-Lock™ Push Button Aluminum Crossover            | 10159-70 |
| PAC1596002 | Mid-Lid Gear-Lock™ Push Button Aluminum Crossover            | 10159-70 |
| 1701000    | Limited Edition Premium Push Button Gear-Lock™ Truck Boxes   | 10159-23 |
| PSC1460000 | Gull Wing Gear-Lock™ Push Button Steel Crossover             | 10064    |
| PSC1460002 | Gull Wing Gear-Lock™ Push Button Steel Crossover             | 10064    |
| PSC1458000 | Gear-Lock™ Push Button Single Lid Steel Crossover            | 10159-55 |
| PSC1458002 | Gear-Lock™ Push Button Single Lid Steel Crossover            | 10159-55 |
| PSC1455000 | Gear-Lock™ Push Button Single Lid Steel Crossover            | 10159-24 |
| PSC1455002 | Gear-Lock™ Push Button Single Lid Steel Crossover            | 10159-24 |
| PSC1456000 | Gear-Lock™ Push Button Single Lid Steel Crossover            | 10159-24 |
| PSC1456002 | Gear-Lock™ Push Button Single Lid Steel Crossover            | 10159-24 |
| PSC1457000 | Gear-Lock™ Push Button Single Lid Steel Crossover            | 10159-26 |
| PSC1457002 | Gear-Lock™ Push Button Single Lid Steel Crossover            | 10159-26 |

INNERSIDES

## ALUMINUM INNERSIDES

- Lid reinforced with bolster for superior strength
- Adjustable lid strikers keep the lid locked down tight for improved security
- High-strength body design resists cargo damage and protects the locking mechanism
- Leak proof stainless steel paddle handles prevent moisture from entering
- Self rising lids with gas spring lid lifts for easy access
- Includes mounting kit and supporting legs with hardware



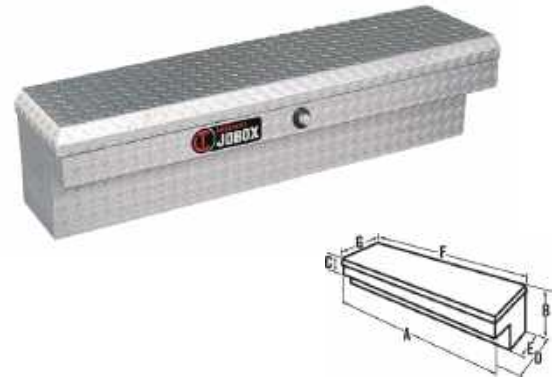
| Cat. No. | Color  | Size         | A        | B     | C        | D        | E    | F         | G     | Usable Cu. Ft. | App. Ship Wt. |
|----------|--------|--------------|----------|-------|----------|----------|------|-----------|-------|----------------|---------------|
| 1-312000 | Bright | 49" Long Lid | 47.75 in | 11 in | 5.375 in | 12.25 in | 8 in | 48.625 in | 13 in | 2.7 ft³        | 24.5 lb       |
| 1-312002 | Black  | 49" Long Lid | 47.75 in | 11 in | 5.375 in | 12.25 in | 8 in | 48.625 in | 13 in | 2.7 ft³        | 24.5 lb       |
| 1-313000 | Bright | 59" Long Lid | 57.75 in | 11 in | 5.375 in | 12.25 in | 8 in | 58.625 in | 13 in | 3.2 ft³        | 30.0 lb       |
| 1-313002 | Black  | 59" Long Lid | 57.75 in | 11 in | 5.375 in | 12.25 in | 8 in | 58.625 in | 13 in | 3.2 ft³        | 30.0 lb       |



Tough gets the job done.  
Smart gets the job done right.

## GEAR-LOCK™ ALUMINUM INNERSIDES

- Gear-Lock™ self adjusting dual rotary lock system always latches and closes for superior security
- Self-aligning latch pins pivot from side to side and lock the lid into Gear-Lock™ latch for premium security
- High-strength RSL™ laminated 3-layer rigid structural lid is the strongest, most rigid aluminum lid we've tested
- Reinforced high-strength body and full-width lock console resists cargo damage and protects the lock system
- Heavy-duty guards protect the vertical-action gas spring lid lifts and help ensure long-term durability
- Built-in full-length storage compartment for small tools and parts
- Includes mounting kit and supporting legs with hardware



| Cat. No.   | Color  | Size             | A        | B     | C        | D         | E        | F       | G     | Usable Cu. Ft. | App. Ship Wt. |
|------------|--------|------------------|----------|-------|----------|-----------|----------|---------|-------|----------------|---------------|
| PAN1441000 | Bright | 48 1/2" Long Lid | 47.75 in | 11 in | 5.375 in | 12.125 in | 7.875 in | 48.5 in | 13 in | 2.7 ft³        | 28.5 lb       |
| PAN1441002 | Black  | 48 1/2" Long Lid | 47.75 in | 11 in | 5.375 in | 12.125 in | 7.875 in | 48.5 in | 13 in | 2.7 ft³        | 28.5 lb       |
| PAN1442000 | Bright | 58 1/2" Long Lid | 57.75 in | 11 in | 5.375 in | 12.125 in | 7.875 in | 58.5 in | 13 in | 3.2 ft³        | 32 lb         |
| PAN1442002 | Black  | 58 1/2" Long Lid | 57.75 in | 11 in | 5.375 in | 12.125 in | 7.875 in | 58.5 in | 13 in | 3.2 ft³        | 32 lb         |

## GEAR-LOCK™ STEEL INNERSIDES

- Gear-Lock™ push button lock ratchets lid to box for superior security
- Self-aligning latch pins pivot from side to side and lock the lid into Gear-Lock™ latch for premium security
- High-strength body design resists cargo damage and protects locking mechanism
- Self rising lids with gas spring lid lifts for easy access
- Tough Armor-Brite® powder paint finish has superior rust resistance
- RSL™ laminated rigid structural lid bolster for superior strength
- Built-in front storage for convenient small item storage
- Includes mounting kit and supporting legs with hardware



| Cat. No.   | Color | Size             | A        | B         | C        | D        | E       | F       | G     | Usable Cu. Ft. | App. Ship Wt. |
|------------|-------|------------------|----------|-----------|----------|----------|---------|---------|-------|----------------|---------------|
| PSN1451000 | White | 47 1/2" Long Lid | 47.75 in | 11.125 in | 5.375 in | 12.25 in | 8.25 in | 47.5 in | 12 in | 2.6 ft³        | 48.5 lb       |
| PSN1451002 | Black | 47 1/2" Long Lid | 47.75 in | 11.125 in | 5.375 in | 12.25 in | 8.25 in | 47.5 in | 12 in | 2.6 ft³        | 48.5 lb       |
| PSN1452000 | White | 58 1/2" Long Lid | 57.75 in | 11.125 in | 5.375 in | 12.25 in | 8.25 in | 58.5 in | 12 in | 3.2 ft³        | 60.0 lb       |
| PSN1452002 | Black | 58 1/2" Long Lid | 57.75 in | 11.125 in | 5.375 in | 12.25 in | 8.25 in | 58.5 in | 12 in | 3.2 ft³        | 60.0 lb       |

INNERSIDES

## INNERSIDES REPLACEMENT SHOCKS



| Item No.   | Description                    | Shock    |
|------------|--------------------------------|----------|
| 1-312000   | Aluminum Innersides            | 10159-68 |
| 1-312002   | Aluminum Innersides            | 10159-68 |
| 1-313000   | Aluminum Innersides            | 10159-68 |
| 1-313002   | Aluminum Innersides            | 10159-68 |
| PAN1441000 | Gear-Lock™ Aluminum Innersides | 10159-68 |
| PAN1441002 | Gear-Lock™ Aluminum Innersides | 10159-68 |
| PAN1442000 | Gear-Lock™ Aluminum Innersides | 10159-68 |
| PAN1442002 | Gear-Lock™ Aluminum Innersides | 10159-68 |
| PSN1451000 | 47 1/2 in Long Lid             | 10159-15 |
| PSN1451002 | 47 1/2 in Long Lid             | 10159-15 |
| PSN1452000 | 58 1/2 in Long Lid             | 10159-15 |
| PSN1452002 | 58 1/2 in Long Lid             | 10159-15 |

## ALUMINUM TOPSIDES

- Reinforced rain gutter doors seal around topside opening to prevent leakage or moisture
- Heavy-duty hinges provide high strength security and longevity
- Stainless steel rotating t-handle pulls the door tight against the seal
- Quick release coated aircraft cables allow door to drop down 180 degrees for full accessibility
- Automotive bulb weather stripping seals door 360°
- Includes mounting kit and supporting legs with hardware



| Cat. No. | Color  | Size     | A     | B     | C     | D     | E        | Usable Cu. Ft.       | App. Ship Wt. |
|----------|--------|----------|-------|-------|-------|-------|----------|----------------------|---------------|
| 570000   | Bright | 44" Long | 44 in | 15 in | 17 in | 40 in | 12.75 in | 5.7 ft <sup>3</sup>  | 32.0 lb       |
| 572000   | Bright | 72" Long | 72 in | 15 in | 17 in | 40 in | 12.75 in | 9.4 ft <sup>3</sup>  | 55.0 lb       |
| 572002D  | Black  | 72" Long | 72 in | 15 in | 17 in | 40 in | 12.75 in | 9.4 ft <sup>3</sup>  | 55.0 lb       |
| 573000   | Bright | 88" Long | 88 in | 15 in | 17 in | 40 in | 12.75 in | 11.5 ft <sup>3</sup> | 58.0 lb       |
| 573002   | Black  | 88" Long | 88 in | 15 in | 17 in | 40 in | 12.75 in | 11.5 ft <sup>3</sup> | 58.0 lb       |
| 574000D  | Bright | 96" Long | 96 in | 15 in | 17 in | 40 in | 12.75 in | 12.5 ft <sup>3</sup> | 63.0 lb       |
| 574002D  | Black  | 96" Long | 96 in | 15 in | 17 in | 40 in | 12.75 in | 12.5 ft <sup>3</sup> | 63.0 lb       |

## STEEL TOPSIDES

- Reinforced rain gutter doors seal around topside opening to prevent leakage or moisture
- Heavy-duty hinges provide high strength security and longevity
- Stainless steel rotating t-handle pulls the door tight against the seal
- Quick release coated aircraft cables allow door to drop down 180 degrees for full accessibility
- Automotive bulb weather stripping seals door 360°
- Includes mounting kit and supporting legs with hardware
- Tough Armor-Brite® powder paint finish has superior rust resistance



| Cat. No. | Color | Size     | A     | B     | C     | D     | E        | Usable Cu. Ft. | App. Ship Wt. |
|----------|-------|----------|-------|-------|-------|-------|----------|----------------|---------------|
| 577000   | White | 72" Long | 72 in | 15 in | 17 in | 40 in | 12.75 in | 9.4 ft³        | 118.0 lb      |
| 578000   | White | 88" Long | 88 in | 15 in | 17 in | 40 in | 12.75 in | 11.5 ft³       | 140.0 lb      |
| 579000   | White | 96" Long | 96 in | 15 in | 17 in | 40 in | 12.75 in | 12.5 ft³       | 146.0 lb      |

## STEEL UNDERBED BOXES

- Industrial grade steel hinges and drop down door for easy loading and unloading and the high strength door cables create versatility and strength
- Bulb-shaped automotive weather stripping and extended rain gutter help keep out the weather
- Quick release keyway connectors allow the door to drop down when cables are detached
- Rugged, one-piece lock housing helps protect the lock components and provides extra strength to the door
- Rotating t-handle with a reinforced cam lock, three-point locking system and one-piece lock housing provide greater security



| Cat. No. | Color | Length | Width | Height | Inside Length | Inside Width | Inside Height | Usable Cu. Ft. | App. Ship Wt. |
|----------|-------|--------|-------|--------|---------------|--------------|---------------|----------------|---------------|
| 7924160  | White | 24 in  | 16 in | 14 in  | 24 in         | 15.875 in    | 13.875 in     | 3.06 ft³       | 55 lb         |
| 7924162  | Black | 24 in  | 16 in | 14 in  | 24 in         | 15.875 in    | 13.875 in     | 3.06 ft³       | 55 lb         |
| 790980   | White | 24 in  | 18 in | 18 in  | 24 in         | 16.75 in     | 17.875 in     | 4.16 ft³       | 68 lb         |
| 790982   | Black | 24 in  | 18 in | 18 in  | 24 in         | 16.75 in     | 17.875 in     | 4.16 ft³       | 68 lb         |
| 7924240  | White | 24 in  | 24 in | 24 in  | 24 in         | 24 in        | 23.875 in     | 7.96 ft³       | 94 lb         |
| 7924242  | Black | 24 in  | 24 in | 24 in  | 24 in         | 24 in        | 23.875 in     | 7.96 ft³       | 94 lb         |
| 791980   | White | 30 in  | 18 in | 18 in  | 30 in         | 16.75 in     | 17.875 in     | 5.20 ft³       | 80 lb         |
| 791982   | Black | 30 in  | 18 in | 18 in  | 30 in         | 16.75 in     | 17.875 in     | 5.20 ft³       | 80 lb         |
| 7930240  | White | 30 in  | 24 in | 24 in  | 30 in         | 24 in        | 23.875 in     | 9.95 ft³       | 110 lb        |
| 7930242  | Black | 30 in  | 24 in | 24 in  | 30 in         | 24 in        | 23.875 in     | 9.95 ft³       | 110 lb        |
| 7936140  | White | 36 in  | 12 in | 14 in  | 36 in         | 11.375 in    | 13.875 in     | 3.43 ft³       | 68 lb         |
| 7936142  | Black | 36 in  | 12 in | 14 in  | 36 in         | 11.375 in    | 13.875 in     | 3.43 ft³       | 68 lb         |
| 7936160  | White | 36 in  | 16 in | 14 in  | 36 in         | 13.85 in     | 13.85 in      | 4.0 ft³        | 76 lb         |
| 7936162  | Black | 36 in  | 16 in | 14 in  | 36 in         | 13.85 in     | 13.85 in      | 4.0 ft³        | 76 lb         |
| 792980   | White | 36 in  | 18 in | 18 in  | 36 in         | 16.75 in     | 17.875 in     | 6.24 ft³       | 92 lb         |
| 792982   | Black | 36 in  | 18 in | 18 in  | 36 in         | 16.75 in     | 17.875 in     | 6.24 ft³       | 92 lb         |

(Continued on next page)

## STEEL UNDERBED BOXES *(Continued from previous page)*

| Cat. No. | Color | Length | Width | Height | Inside Length | Inside Width | Inside Height | Usable Cu. Ft.        | App. Ship Wt. |
|----------|-------|--------|-------|--------|---------------|--------------|---------------|-----------------------|---------------|
| 7936240  | White | 36 in  | 24 in | 24 in  | 36 in         | 24 in        | 23.875 in     | 11.94 ft <sup>3</sup> | 126 lb        |
| 7936242  | Black | 36 in  | 24 in | 24 in  | 36 in         | 24 in        | 23.875 in     | 11.94 ft <sup>3</sup> | 126 lb        |
| 793980   | White | 48 in  | 18 in | 18 in  | 48 in         | 16.75 in     | 17.875 in     | 8.32 ft <sup>3</sup>  | 117 lb        |
| 793982   | Black | 48 in  | 18 in | 18 in  | 48 in         | 16.75 in     | 17.875 in     | 8.32 ft <sup>3</sup>  | 117 lb        |
| 7948240  | White | 48 in  | 24 in | 24 in  | 48 in         | 24 in        | 23.875 in     | 15.92 ft <sup>3</sup> | 158 lb        |
| 7948242  | Black | 48 in  | 24 in | 24 in  | 48 in         | 24 in        | 23.875 in     | 15.92 ft <sup>3</sup> | 158 lb        |
| 794980   | White | 60 in  | 18 in | 18 in  | 60 in         | 16.75 in     | 17.875 in     | 10.40 ft <sup>3</sup> | 142 lb        |
| 794982   | Black | 60 in  | 18 in | 18 in  | 60 in         | 16.75 in     | 17.875 in     | 10.40 ft <sup>3</sup> | 142 lb        |
| 7960240  | White | 60 in  | 24 in | 24 in  | 60 in         | 22.82 in     | 23.85 in      | 18.90 ft <sup>3</sup> | 190 lb        |
| 7960242  | Black | 60 in  | 24 in | 24 in  | 60 in         | 22.82 in     | 23.85 in      | 18.90 ft <sup>3</sup> | 190 lb        |
| 7972180  | White | 72 in  | 18 in | 18 in  | 72 in         | 16.82 in     | 17.85 in      | 12.51 ft <sup>3</sup> | 168 lb        |
| 7972182  | Black | 72 in  | 18 in | 18 in  | 72 in         | 16.82 in     | 17.85 in      | 12.51 ft <sup>3</sup> | 168 lb        |

## MOUNTING BRACKETS

- Heavy-duty 2" C-channel brackets for mounting underbed boxes
- Brackets have multiple mounting holes for easy installation
- Sold in pairs



| Cat. No. | Length | Width | Height | App. Ship Wt. |
|----------|--------|-------|--------|---------------|
| 228000   | 18 in  | 2 in  | 18 in  | 15.0 lb       |
| 229000   | 24 in  | 2 in  | 24 in  | 33.5 lb       |

## STEEL UNDERBED BOX REPLACEMENT CABLES



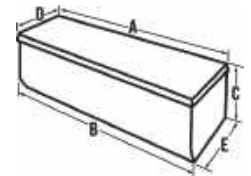
| Item No. | Length | Width | Height | Cable    |
|----------|--------|-------|--------|----------|
| 790980   | 24 in  | 18 in | 18 in  | 10109-13 |
| 790982   | 24 in  | 18 in | 18 in  | 10109-13 |
| 7924160  | 24 in  | 16 in | 14 in  | 10159-13 |
| 7924162  | 24 in  | 16 in | 14 in  | 10159-13 |
| 7924240  | 24 in  | 24 in | 24 in  | 10109-15 |
| 7924242  | 24 in  | 24 in | 24 in  | 10109-15 |
| 791980   | 30 in  | 18 in | 18 in  | 10109-13 |
| 791982   | 30 in  | 18 in | 18 in  | 10109-13 |
| 7930240  | 30 in  | 24 in | 24 in  | 10109-15 |

Tough gets the job done.  
Smart gets the job done right.

| Item No. | Length | Width | Height | Cable    |
|----------|--------|-------|--------|----------|
| 7930242  | 30 in  | 24 in | 24 in  | 10109-15 |
| 792980   | 36 in  | 18 in | 18 in  | 10109-13 |
| 792982   | 36 in  | 18 in | 18 in  | 10109-13 |
| 7936140  | 36 in  | 12 in | 14 in  | 10109-19 |
| 7936142  | 36 in  | 12 in | 14 in  | 10109-19 |
| 7936160  | 36 in  | 16 in | 14 in  | 10109-14 |
| 7936162  | 36 in  | 16 in | 14 in  | 10109-14 |
| 7936240  | 36 in  | 24 in | 24 in  | 10109-15 |
| 7936242  | 36 in  | 24 in | 24 in  | 10109-15 |
| 793980   | 48 in  | 18 in | 18 in  | 10109-13 |
| 793982   | 48 in  | 18 in | 18 in  | 10109-13 |
| 7948240  | 48 in  | 24 in | 24 in  | 10109-15 |
| 7948242  | 48 in  | 24 in | 24 in  | 10109-15 |
| 794980   | 60 in  | 18 in | 18 in  | 10109-13 |
| 794982   | 60 in  | 18 in | 18 in  | 10109-13 |
| 7960240  | 60 in  | 24 in | 24 in  | 10109-15 |
| 7960242  | 60 in  | 24 in | 24 in  | 10109-15 |
| 7972180  | 72 in  | 18 in | 18 in  | 10109-13 |
| 7972182  | 72 in  | 18 in | 18 in  | 10109-13 |

## GEAR-LOCK™ PADDLE HANDLE ALUMINUM CHESTS

- Gear-Lock™ paddle handle lock ratchets lid to box for superior security
- Self aligning hoop strikers pivot from side-to-side and lock the lid for premium security
- RSL™ laminated rigid structural lid bolster for superior strength
- Self rising lids with dual gas spring lid lifts for easy access
- Full weatherstripping helps seal out moisture and dust
- Wide top box flanges provide extra strength and durability
- Angled edges on front and side walls provide best fit, even when installed with a bed liner



| Cat. No. | Color  | Size           | A     | B        | C        | D       | E     | Usable Cu. Ft. | App. Ship Wt. |
|----------|--------|----------------|-------|----------|----------|---------|-------|----------------|---------------|
| 1-350000 | Bright | Full Size Long | 61 in | 61.25 in | 19.25 in | 20.5 in | 20 in | 12 ft³         | 53.0 lb       |
| 1-350002 | Black  | Full Size Long | 61 in | 61.25 in | 19.25 in | 20.5 in | 20 in | 12 ft³         | 53.0 lb       |

## GEAR-LOCK™ ALUMINUM CHESTS

- Gear-Lock™ self adjusting dual rotary lock system always latches and closes for superior security
- Self-aligning latch pins pivot from side to side and lock the lid into Gear-Lock™ latch for premium security
- RSL™ laminated rigid structural lid bolster for superior strength
- High-strength body and full-width lock console resist cargo damage and protect the locking mechanism
- Self rising lids with dual gas spring lid lifts for easy access
- Leak proof stainless steel paddle handles prevent moisture from entering
- Universal fit design features a tapered bottom section on the ends and front wall



| Cat. No.   | Color  | Size                | A     | B         | C         | D         | E         | Usable Cu. Ft.       | App. Ship Wt. |
|------------|--------|---------------------|-------|-----------|-----------|-----------|-----------|----------------------|---------------|
| PAH1420000 | Bright | SWB Fullsize        | 61 in | 60.125 in | 19.375 in | 20.625 in | 18.75 in  | 12.1 ft <sup>3</sup> | 53.0 lb       |
| PAH1420002 | Black  | SWB Fullsize        | 61 in | 60.125 in | 19.375 in | 20.625 in | 18.75 in  | 12.1 ft <sup>3</sup> | 53.0 lb       |
| PAH1424000 | Bright | Extra-Wide Fullsize | 61 in | 60.125 in | 19.375 in | 27.625 in | 24.875 in | 17 ft <sup>3</sup>   | 68.0 lb       |
| PAH1424002 | Black  | Extra-Wide Fullsize | 61 in | 60.125 in | 19.375 in | 27.625 in | 24.875 in | 17 ft <sup>3</sup>   | 68.0 lb       |

## ALUMINUM CHESTS

- Recessed hinge allows the lid to fully open when the back of the chest is placed against another object
- Rugged aluminum construction with reinforced lid for maximum strength and security
- Gas spring lid lifts allow easier access
- Leak proof stainless steel paddle handles prevent moisture from entering
- Full weatherstripping helps seal out moisture and dust
- Tapered lower front wall will fit better in trucks with all types of bed liners



| Cat. No. | Color  | Size  | A        | B       | C         | D        | E        | Usable Cu. Ft.      | App. Ship Wt. |
|----------|--------|-------|----------|---------|-----------|----------|----------|---------------------|---------------|
| 808000   | Bright | 36 in | 36.75 in | 36 in   | 15.5 in   | 17.25 in | 17 in    | 5.1 ft <sup>3</sup> | 25.5 lb       |
| 899260   | Bright | 46 in | 46.5 in  | 46 in   | 16.5 in   | 18.75 in | 17.75 in | 7 ft <sup>3</sup>   | 44.0 lb       |
| 896260   | Bright | 58 in | 59.5 in  | 58.5 in | 17.875 in | 18.75 in | 17.75 in | 9.8 ft <sup>3</sup> | 47.5 lb       |
| 896262   | Black  | 58 in | 59.5 in  | 58.5 in | 17.875 in | 18.75 in | 17.75 in | 9.8 ft <sup>3</sup> | 47.5 lb       |

## STEEL HEAVY DUTY CHEST

- High strength beveled edge lid
- Sliding tray for small parts and tools
- Leak proof stainless steel paddle handles prevent moisture from entering
- Dual gas spring lid lifts for easy opening lid
- Bulb-shaped automotive weather stripping
- Channel reinforced front panel
- One-piece box body construction
- Recessed hinge



| Cat. No. | Color | Size           | A         | B       | C     | D       | E        | Usable Cu. Ft.       | App. Ship Wt. |
|----------|-------|----------------|-----------|---------|-------|---------|----------|----------------------|---------------|
| 817980   | White | Fullsize Steel | 59.125 in | 58.5 in | 19 in | 20.5 in | 20.25 in | 10.2 ft <sup>3</sup> | 129.0 lb      |

## STEEL PORTABLE UTILITY CHESTS

- 18-gauge steel construction with fully welded seams and formed edges
- Lock down chest and remove easily with quick connect brackets
- Sliding tray provides convenient storage for hand tools and small parts
- Full weatherstripping helps seal out moisture and dust
- Tough Armor-Brite® powder paint finish has superior rust resistance



| Cat. No. | Color | Size  | A         | B     | C        | D        | E        | Usable Cu. Ft.      | App. Ship Wt. |
|----------|-------|-------|-----------|-------|----------|----------|----------|---------------------|---------------|
| 810000   | White | 32 in | 32.625 in | 32 in | 12.75 in | 11.25 in | 10.75 in | 2.2 ft <sup>3</sup> | 31.5 lb       |

## HYBRID FULLSIZE PORTABLE CHEST

- Stylish tread plate aluminum lid with rigid steel base for support
- Removable and portable chest offers versatility where secure storage is needed
- Leak proof stainless steel paddle handles prevent moisture from entering
- Gas spring lid lifts automatically raise lid and allow for easier access
- Wide lifting handles are easy to grip and will support heavy loads
- Full weatherstripping helps seal out moisture and dust
- Rugged aluminum strikers will adjust horizontally to keep the lid locked down tight



| Cat. No.   | Color | Size     | A     | B     | C     | D     | E     | Usable Cu. Ft.      | App. Ship Wt. |
|------------|-------|----------|-------|-------|-------|-------|-------|---------------------|---------------|
| DYH1453002 | Black | Fullsize | 49 in | 48 in | 18 in | 21 in | 20 in | 9.9 ft <sup>3</sup> | 50 lb         |

## ALUMINUM PORTABLE CHESTS

- Removable and portable aluminum chests offer versatility wherever secure storage is needed
- Wide lifting handles are easy to grip and will support heavy loads
- Rugged aluminum strikers will adjust vertically and horizontally to keep the lid locked down tight
- Leak proof stainless steel paddle handles prevent moisture from entering
- Full weatherstripping helps seal out moisture and dust
- Gas spring lid lifts automatically raise lid and allows for easier access



| Cat. No. | Color  | Size     | A     | B     | C       | D     | E     | Usable Cu. Ft.       | App. Ship Wt. |
|----------|--------|----------|-------|-------|---------|-------|-------|----------------------|---------------|
| 220000D  | Bright | 37" Long | 37 in | 36 in | 14.5 in | 18 in | 20 in | 5.4 ft <sup>3</sup>  | 33.0 lb       |
| 221000D  | Bright | 49" Long | 49 in | 48 in | 18 in   | 18 in | 20 in | 9.9 ft <sup>3</sup>  | 43.0 lb       |
| 222000D  | Bright | 57" Long | 57 in | 56 in | 18 in   | 18 in | 20 in | 11.6 ft <sup>3</sup> | 50.0 lb       |

## TRUCK CHEST REPLACEMENT SHOCKS



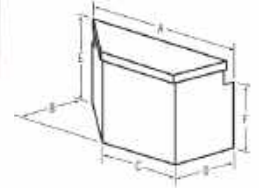
| Item No.   | Description                             | Shock    |
|------------|-----------------------------------------|----------|
| 220000D    | Aluminum Portable Chest                 | 10159-56 |
| 221000D    | Aluminum Portable Chest                 | 10159-66 |
| 222000D    | Aluminum Portable Chest                 | 10159-56 |
| 808000     | Aluminum Chest for Trucks               | 10159-31 |
| 896260     | Aluminum Chest for Trucks               | 10159-70 |
| 896262     | Aluminum Chest for Trucks               | 10159-70 |
| 1-350000   | Gear-Lock™ Paddle Handle Aluminum Chest | 10159-56 |
| PAH1420000 | Gear-Lock™ Aluminum Chest               | 10159-56 |
| PAH1420002 | Gear-Lock™ Aluminum Chest               | 10159-56 |
| PAH1424000 | Gear-Lock™ Aluminum Chest               | 10159-24 |
| PAH1424002 | Gear-Lock™ Aluminum Chest               | 10159-24 |
| DYH1453002 | Hybrid Full Size Portable Chest         | 10159-01 |
| 817980     | Steel Heavy-Duty Chest                  | 10159-70 |



Tough gets the job done.  
Smart gets the job done right.

## ALUMINUM TRAILER TONGUE BOXES

- Trailer tongue box mounts easily against rail or trailer wall
- Rugged aluminum construction with reinforced lid for maximum strength and security
- Offset gas spring lid lift allows easier access from drivers side
- Leak proof stainless steel paddle handles prevent moisture from entering
- Full weatherstripping helps seal out moisture and dust
- Tough Armor-Brite® powder paint finish has superior rust resistance



| Cat. No. | Color  | Size  | A     | B     | C     | D       | E       | Usable Cu. Ft.      | App. Ship Wt. |
|----------|--------|-------|-------|-------|-------|---------|---------|---------------------|---------------|
| 405000D  | Bright | 33 in | 33 in | 16 in | 20 in | 17.5 in | 20.5 in | 4.5 ft <sup>3</sup> | 24.5 lb       |
| 410000D  | Bright | 48 in | 48 in | 18 in | 25 in | 21.5 in | 20.5 in | 7.1 ft <sup>3</sup> | 33.5 lb       |

## TRAILER TONGUE REPLACEMENT SHOCKS



| Item No. | Description                 | Shock    |
|----------|-----------------------------|----------|
| 405000D  | Aluminum Trailer Tongue Box | 10159-71 |
| 410000D  | Aluminum Trailer Tongue Box | 10159-31 |

## 26" LONG FLOOR MODEL WITH THREE DRAWERS

- Extruded heavy-duty drawer glides support up to 75 lbs per drawer
- Latches automatically lock the drawers when closed
- Pins prevent the drawers from rolling off the glides
- Moveable dividers to create different size bins
- Heavy-gauge aluminum is light enough for easy mobility and durable enough to stand up to heavy loads on top of and inside drawers



| Cat. No. | Length | Width | Height | Drawer Compartments | Number of Dividers | Usable Cu. Ft.      | App. Ship Wt. |
|----------|--------|-------|--------|---------------------|--------------------|---------------------|---------------|
| 1405980  | 26 in  | 36 in | 6 in   | 3                   | 2                  | 3.6 ft <sup>3</sup> | 51.0 lb       |

## 26" LONG STACKED MODEL WITH SIX DRAWERS



| Cat. No. | Length | Width | Height | Drawer Compartments | Number of Dividers | Usable Cu. Ft.    | App. Ship Wt. |
|----------|--------|-------|--------|---------------------|--------------------|-------------------|---------------|
| 1406980  | 26 in  | 36 in | 12 in  | 6                   | 2                  | 7 ft <sup>3</sup> | 81.0 lb       |

## 50" LONG FLOOR MODELS



| Cat. No. | Length | Width | Height | Drawer Compartments | Number of Dividers | Usable Cu. Ft.       | App. Ship Wt. |
|----------|--------|-------|--------|---------------------|--------------------|----------------------|---------------|
| 1401980  | 50 in  | 12 in | 6 in   | 1                   | 5                  | 2.5 ft <sup>3</sup>  | 31.0 lb       |
| 1402980  | 50 in  | 24 in | 6 in   | 2                   | 5                  | 5.1 ft <sup>3</sup>  | 61.0 lb       |
| 1403980  | 50 in  | 36 in | 6 in   | 3                   | 5                  | 7.6 ft <sup>3</sup>  | 89.0 lb       |
| 1404980  | 50 in  | 48 in | 6 in   | 4                   | 5                  | 10.1 ft <sup>3</sup> | 119.0 lb      |

DRAWER STORAGE

## 50" LONG STACKED MODELS



| Cat. No. | Length | Width | Height | Drawer Compartments | Number of Dividers | Usable Cu. Ft.       | App. Ship Wt. |
|----------|--------|-------|--------|---------------------|--------------------|----------------------|---------------|
| 1407980  | 50 in  | 12 in | 12 in  | 2                   | 5                  | 5.1 ft <sup>3</sup>  | 59.0 lb       |
| 1408980  | 50 in  | 12 in | 18 in  | 3                   | 5                  | 7.6 ft <sup>3</sup>  | 85.0 lb       |
| 1409980  | 50 in  | 12 in | 24 in  | 4                   | 5                  | 10.1 ft <sup>3</sup> | 114.0 lb      |

—|—  
Tough gets the job done.  
Smart gets the job done right.  
—|—

## PLASTIC DRAWER DIVIDER

- For use with Crescent aluminum drawer storage products
- Moveable divider to create different size bins
- Can be used with the following Crescent Items: 1401980 through 1409980
- Customize storage with the addition of this divider
- Durable divider
- Sold as singles



| Cat. No. | Length   | Width   | Height | Number of Dividers | App. Ship Wt. |
|----------|----------|---------|--------|--------------------|---------------|
| 1410980  | 0.125 in | 11.5 in | 4.5 in | 1                  | 0.2 lb        |

## 9" TALL DRAWER UNITS

- 14-gauge steel StorAll® drawer storage is designed to provide extreme durability and safety with unprecedented versatility
- Perfect for work trucks, trailers, and vans, StorAll® provides up to 50% more drawer weight capacity and up to 20% more storage capacity than competitors
- Drawers are customizable with adjustable front-to-rear dividers and bin dividers
- Grip-and-Release™ system allows safe opening and closing of heavy drawers on sloped surfaces
- Cabinet top and bottom reinforced with 12-gauge steel channels
- Built-in rain gutter channel, anti-skid strips, full bulb-shaped automotive weather stripping and 16-gauge galvanized movable bin dividers all benefit the user
- Steel plunger engages internal drawer stops, drawers have 650 lb. load rating and steel bearing tractors with 1,000 lb. rated bearings make for smooth drawer operation
- Recessed drawer fronts protect the handles from damage



| Cat. No. | Color | Length | Width | Height | Drawer Compartments | Number of Dividers | Usable Cu. Ft. | App. Ship Wt. |
|----------|-------|--------|-------|--------|---------------------|--------------------|----------------|---------------|
| 661980   | White | 48 in  | 12 in | 9 in   | 1                   | 7                  | 1 ft³          | 115.0 lb      |
| 661982   | Black | 48 in  | 12 in | 9 in   | 1                   | 7                  | 1 ft³          | 115.0 lb      |
| 662980   | White | 48 in  | 24 in | 9 in   | 2                   | 13                 | 2.3 ft³        | 180.0 lb      |
| 662982   | Black | 48 in  | 24 in | 9 in   | 2                   | 13                 | 2.3 ft³        | 180.0 lb      |
| 663980   | White | 48 in  | 36 in | 9 in   | 3                   | 19                 | 3.6 ft³        | 222.0 lb      |
| 663982   | Black | 48 in  | 36 in | 9 in   | 3                   | 19                 | 3.6 ft³        | 222.0 lb      |
| 664980   | White | 48 in  | 48 in | 9 in   | 4                   | 24                 | 5 ft³          | 255.0 lb      |
| 664982   | Black | 48 in  | 48 in | 9 in   | 4                   | 24                 | 5 ft³          | 255.0 lb      |

DRAWER STORAGE

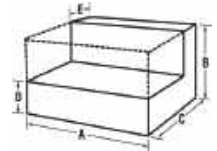
## 13" TALL DRAWER UNITS



| Cat. No. | Color | Length | Width | Height | Drawer Compartments | Number of Dividers | Usable Cu. Ft.      | App. Ship Wt. |
|----------|-------|--------|-------|--------|---------------------|--------------------|---------------------|---------------|
| 665980   | White | 48 in  | 12 in | 13 in  | 1                   | 7                  | 1.8 ft <sup>3</sup> | 155.0 lb      |
| 665982   | Black | 48 in  | 12 in | 13 in  | 1                   | 7                  | 1.8 ft <sup>3</sup> | 155.0 lb      |
| 666980   | White | 48 in  | 24 in | 13 in  | 2                   | 13                 | 4.2 ft <sup>3</sup> | 245.0 lb      |
| 666982   | Black | 48 in  | 24 in | 13 in  | 2                   | 13                 | 4.2 ft <sup>3</sup> | 245.0 lb      |
| 667980   | White | 48 in  | 36 in | 13 in  | 3                   | 19                 | 6.6 ft <sup>3</sup> | 305.0 lb      |
| 667982   | Black | 48 in  | 36 in | 13 in  | 3                   | 19                 | 6.6 ft <sup>3</sup> | 305.0 lb      |
| 668980   | White | 48 in  | 48 in | 13 in  | 4                   | 24                 | 9 ft <sup>3</sup>   | 380.0 lb      |
| 668982   | Black | 48 in  | 48 in | 13 in  | 4                   | 24                 | 9 ft <sup>3</sup>   | 380.0 lb      |

## ALUMINUM LIQUID TRANSFER TANKS

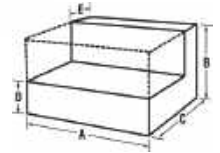
- Two full center baffles add extra strength and control the flow of the contents when moving
- 2" NPT reinforced bungs allow mounting a pump on either side of tank
- Four high strength brackets for securing the tank to the bed
- Lockable filler cap and coupler
- Heavy-duty 0.125" tread plate aluminum



| Cat. No. | Color  | Shape       | Safe Fill (US) | Max Fill (US) | Capacity (US) | A        | B        | C        | D    | E     | App. Ship Wt. |
|----------|--------|-------------|----------------|---------------|---------------|----------|----------|----------|------|-------|---------------|
| 439000   | Bright | Square      | 47 gal (US)    | 52 gal (US)   | 50 gal (US)   | 23.25 in | 23.25 in | 23.25 in | N/A  | N/A   | 64.0 lb       |
| 438000   | Bright | Rectangular | 91 gal (US)    | 102 gal (US)  | 100 gal (US)  | 45.25 in | 23.25 in | 23.25 in | N/A  | N/A   | 94.0 lb       |
| 437000   | Bright | L-Shaped    | 99 gal (US)    | 104 gal (US)  | 100 gal (US)  | 57.5 in  | 25 in    | 31 in    | 9 in | 10 in | 112.0 lb      |

## FUEL-N-TOOL COMBO ALUMINUM TRANSFER TANK

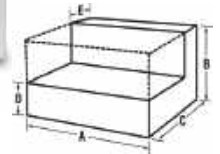
- Offers the convenience of a L-shaped transfer tank and a removable chest
- Two full center baffles add extra strength and control the flow of the contents when moving
- 2" NPT reinforced bungs allow mounting a pump on either side of the tank
- Four high strength brackets for securing the tank to the bed
- Leak proof stainless steel paddle handles prevent moisture and dirt from entering
- Chest provides 4.5 cubic feet of high-strength storage for tools and accessories
- RSLTM rigid structural lid, heavy-duty adjustable lid strikers, and high-strength body resist break-ins
- Self-rising lid has two heavy-duty gas spring lid lifts



| Cat. No. | Color  | Shape    | Safe Fill (US) | Max Fill (US) | Capacity (US) | A        | B     | C     | D    | E        | App. Ship Wt. |
|----------|--------|----------|----------------|---------------|---------------|----------|-------|-------|------|----------|---------------|
| 433000   | Bright | L-Shaped | 72 gal (US)    | 77 gal (US)   | 74 gal (US)   | 48.25 in | 19 in | 31 in | 9 in | 10.75 in | 129.0 lb      |

## STEEL TRANSFER TANKS

- Tanks have internal baffles for extra strength and to control the flow of contents when moving
- 2" NPT reinforced bungs allow mounting a pump on either side of the tank
- Built-in lifting rings to assist with lifting and moving an empty tank
- Lockable filler cap and coupler prevent excessive pressure build up
- Heavy-duty brackets to secure the tank to the truck bed
- Safety fill capacity allows space for the contents to expand in warm weather
- Drain plug allows for safe drainage of combustible liquids



| Cat. No. | Color | Shape                | Safe Fill (US) | Max Fill (US) | Capacity (US) | A        | B     | C        | D      | E     | App. Ship Wt. |
|----------|-------|----------------------|----------------|---------------|---------------|----------|-------|----------|--------|-------|---------------|
| 486000   | White | Vertical             | 36 gal (US)    | 42 gal (US)   | 36 gal (US)   | 54 in    | 19 in | 9 in     | N/A    | N/A   | 97.0 lb       |
| 485000   | White | Square               | 50 gal (US)    | 55 gal (US)   | 50 gal (US)   | 23.25 in | 24 in | 23.25 in | N/A    | N/A   | 85.5 lb       |
| 484000   | White | Rectangle            | 96 gal (US)    | 107 gal (US)  | 100 gal (US)  | 45.63 in | 24 in | 23.25 in | N/A    | N/A   | 145.0 lb      |
| 484002   | Black | Rectangle            | 96 gal (US)    | 107 gal (US)  | 100 gal (US)  | 45.63 in | 24 in | 23.25 in | N/A    | N/A   | 145.0 lb      |
| 488000   | White | Low Profile L-Shaped | 76 gal (US)    | 82 gal (US)   | 85 gal (US)   | 46 in    | 26 in | 31 in    | 6.5 in | 11 in | 155.0 lb      |
| 488002   | Black | Low Profile L-Shaped | 76 gal (US)    | 82 gal (US)   | 85 gal (US)   | 46 in    | 26 in | 31 in    | 6.5 in | 11 in | 155.0 lb      |
| 482000   | White | L-Shaped             | 51 gal (US)    | 54 gal (US)   | 48 gal (US)   | 27 in    | 26 in | 31 in    | 9 in   | 11 in | 106.0 lb      |
| 487000   | White | L-Shaped             | 88 gal (US)    | 92 gal (US)   | 88 gal (US)   | 54 in    | 25 in | 31 in    | 6.5 in | 11 in | 186.0 lb      |
| 480000   | White | L-Shaped             | 103 gal (US)   | 109 gal (US)  | 100 gal (US)  | 54 in    | 26 in | 31 in    | 9 in   | 11 in | 200.0 lb      |
| 480002   | Black | L-Shaped             | 103 gal (US)   | 109 gal (US)  | 100 gal (US)  | 54 in    | 26 in | 31 in    | 9 in   | 11 in | 200.0 lb      |

## STEEL TRANSFER TANKS FOR 4-DOOR TRUCKS

- Built-in lifting rings to assist with lifting and moving an empty tank
- Lockable filler cap and coupler prevent excessive pressure build up
- Heavy-duty brackets to secure the tank to the truck bed
- Safety fill capacity allows space for the contents to expand in warm weather
- 2" NPT reinforced bungs allow mounting a pump on either side of the tank
- Drain plug allows for safe drainage of combustible liquids



| Cat. No. | Color | Shape    | Safe Fill (US) | Max Fill (US) | Capacity (US) | A        | B     | C     | D      | E        | App. Ship Wt. |
|----------|-------|----------|----------------|---------------|---------------|----------|-------|-------|--------|----------|---------------|
| 498000   | White | L-Shaped | 98 gal (US)    | 106 gal (US)  | 100 gal (US)  | 60.25 in | 25 in | 33 in | 7.5 in | 48.25 in | 175.0 lb      |
| 498002   | Black | L-Shaped | 98 gal (US)    | 106 gal (US)  | 100 gal (US)  | 60.25 in | 25 in | 33 in | 7.5 in | 48.25 in | 175.0 lb      |

## TRANSFER TANK REPLACEMENT SHOCKS



| Item No. | Description                              | Fuel Cap | Shock    |
|----------|------------------------------------------|----------|----------|
| 433000   | Fuel-N-Tool Combo Aluminum Transfer Tank | DP3400   | 10159-66 |

## TRADESMAN BACKPACK

- Professional grade backpack is ideal for everyday use, with an adjustable front pocket to hold large items like electrical cords
- 4 exterior pockets and 34 interior pockets for all parts as well as exterior pockets for the frequently used tools
- Hard polypropylene base resists moisture and withstands impacts, delivering lasting durability
- Bright orange interior helps you find your tools faster in darker environments
- Made with 1680D polyester and metal hardware to hold up on the toughest jobsite
- Inner sleeves are open at the bottom so small items won't get lost in narrow pockets
- Specialized magnetic pocket stores items for quick access
- Ergonomic handle is easy to grab and provides a comfortable, nonslip grip
- Includes a water bottle holder and a tape measure clip for added convenience
- Top-quality YKK zipper comes with a 3-year warranty and an oversized pull for added convenience



| Cat. No. | Color                 | Depth | Height | Product Weight |
|----------|-----------------------|-------|--------|----------------|
| CTB1000N | Rawhide, Black & Gray | 14 in | 18 in  | 8.000 lb       |

Tough gets the job done.  
Smart gets the job done right.

# CRESCENT TOOL BAGS

You're not average. Neither are these.

Superior tool organization combined with the quickest and easiest access, these bags are made to take the drops, drags, hits and misses that are just part of life on every jobsite.



### Magnetic-Closure Pocket

For easy access to keys, cell phone, and other frequently used items.

### Zippered Interior Mesh Pockets

For quick view of contents

### Large Adjustable Front Pocket

For easy access to bulk items like power cords

### Tear-Resistant 1680D Ballistic Polyester and Metal Hardware

For maximum durability

### Rugged Polypropylene Base

Built to protect your tools from impact and moisture

CTB1000N

## TRADESMAN CLOSED TOP TOOL BAGS

- Professional grade closed top bag is ideal for everyday use in rugged conditions
- 3 exterior pockets and a 29-pocket interior tool wall provide additional organization
- Hard polypropylene base resists moisture and withstands impacts, delivering lasting durability
- Bright orange interior helps you find your tools faster in darker environments
- Made with 1680D polyester and metal hardware to hold up on the toughest jobsite
- Interior and exterior PALS-style loops provide quick, easy access to your frequently used tools
- Inner sleeves are open at the bottom so small items won't get lost deep in narrow pockets
- Adjustable, padded shoulder strap and padded nonslip bar handle make carrying the bag more comfortable
- Includes a water bottle holder and a tape measure clip for added convenience
- Top-quality YKK zipper comes with a 3-year warranty and an oversized pull for added convenience



| Cat. No. | Color                 | Depth | Height  | Product Weight |
|----------|-----------------------|-------|---------|----------------|
| CTB1450N | Rawhide, Black & Gray | 14 in | 14.5 in | 5.220 lb       |
| CTB1750N | Rawhide, Black & Gray | 17 in | 16.7 in | 6.550 lb       |

## TRADESMAN OPEN TOP TOOL BAGS

- Professional grade open top bag is ideal for everyday use in rugged conditions
- 17 interior and 8 exterior pockets line the bag, so you can keep your equipment in order
- Hard polypropylene base resists moisture and withstands impacts, delivering lasting durability
- Bright orange interior helps you find your tools faster in darker environments
- Tape measure clip for added convenience
- Made with 1680D polyester and metal hardware to hold up on the toughest jobsite
- Center metal handle meets durability standards and provides comfort while carrying the bag from job to job
- Adjustable, padded shoulder strap and padded nonslip bar handle make carrying the bag more comfortable
- Top-quality YKK zipper comes with a 3-year warranty and an oversized pull for added convenience



| Cat. No. | Color                 | Depth | Height  | Product Weight |
|----------|-----------------------|-------|---------|----------------|
| CTB1410N | Rawhide, Black & Gray | 14 in | 14.5 in | 5.510 lb       |
| CTB1710N | Rawhide, Black & Gray | 17 in | 16 in   | 7.050 lb       |



## 20" CONTRACTOR TOOL BAG

- Professional grade contractor bulk bag is perfect for everyday use in rugged conditions
- 12 exterior and 19 interior pockets provide a variety of storage and organization options for materials, tools and small parts
- Hard polypropylene base resists moisture and withstands impacts, delivering lasting durability
- Bright orange interior helps you find your tools faster in darker environments
- Made with 1680D polyester and metal hardware to hold up on the toughest jobsite
- 13 PALS-style loops on the outside of the bag provide quick, easy access to your frequently used tools
- Two padded handles make carrying the bag more comfortable and distribute the bag's weight for added durability
- Padded shoulder strap provides convenient, hands-free transportation
- Top-quality YKK zipper comes with a 3-year warranty and an oversized pull for added convenience



| Cat. No. | Color                 | Depth | Height | Product Weight |
|----------|-----------------------|-------|--------|----------------|
| CTB2010N | Rawhide, Black & Gray | 20 in | 13 in  | 4.870 lb       |

## TRADESMAN ROLLING TOOL BAG

- Professional grade rolling bag is ideal for everyday use in rugged conditions
- 200-lb lid capacity allows you to carry all your tool bags together
- 2-way magnetic lid
- Bright orange interior helps you find your tools faster in darker environments
- 1680 denier ballistic weave material for rugged durability
- Ergonomically designed top handle and telescoping pull handle for comfort and easy mobility
- 35 total pockets for ultimate tool storage capability
- 6 interior and 7 exterior pockets line the bag, so you can keep your equipment in order
- 12 interior and 11 exterior PALS-style loops provide quick, easy access to your frequently used tools



| Cat. No.  | Color                 | Height | Product Weight |
|-----------|-----------------------|--------|----------------|
| CTBR1850N | Rawhide, Black & Gray | 18 in  | 15.590 lb      |

## REMOVABLE TRAYS

- Built-in handles
- Convenient for hand tools and small parts
- Hemmed edges add strength and eliminate sharp edges
- Powder paint



| Cat. No. | Length    | Width | Height | Works With                 | Product Weight |
|----------|-----------|-------|--------|----------------------------|----------------|
| 626990   | 22.187 in | 8 in  | 4 in   | 2-654990 2-655990 2-658990 | 8.000 lb       |
| 627990   | 28.187 in | 8 in  | 4 in   | 2-656990                   | 10.000 lb      |
| 628990   | 18.187 in | 8 in  | 4 in   | 2-652990 2-653990          | 7.000 lb       |
| 620990   | 21.875 in | 8 in  | 4 in   | 635990                     | 6.000 lb       |

## TOUCH UP PAINT

- Crescent JOBOX on site storage touch up paint
- Available in 12 oz cans
- Color is Crescent JOBOX red/rust



| Cat. No. | Description               | Product Weight |
|----------|---------------------------|----------------|
| 82936    | Brown/Rust Touch Up Paint | 1.100 lb       |

## OPTIONAL CASTERS

- Heavy-duty wheels never puncture or go flat
- All purpose rubber tread for grip on many surfaces
- 3" x 3" hole patterns
- 6 in load rating: 3600 lb 4 in load rating 2800 lb
- 1-320990: Set of 4 casters comes with two fixed and two swivel casters
- 1-321990: Set of 4 fixed casters comes with two fixed and two plain swivel brakes
- 1-320993: Set of 4 casters comes with two fixed and two swivel casters with brakes



| Cat. No. | Load Rating | Description                                                | Length | Width  | Height | Product Weight |
|----------|-------------|------------------------------------------------------------|--------|--------|--------|----------------|
| 1-320990 | 2800 lb     | 4" Casters Set of 4 - 2 Fixed & 2 Swivel                   | 4.5 in | 4.0 in | 5.5 in | 15.00 lb       |
| 1-321990 | 3600 lb     | 6" Casters Set of 4 - 2 Fixed & 2 Plain Swivel with Brakes | 4.5 in | 4.0 in | 7.5 in | 19.00 lb       |
| 1-320993 | 3600 lb     | 6" Casters Set of 4 - 2 Fixed and 2 Swivel with Brakes     | 4.5 in | 4.0 in | 7.5 in | 18.00 lb       |

## **NO B.S. MEANS NO B.S.**

Crescent Tools are designed, engineered, and tested to be More Than Tough, but we know that life happens and if your tool breaks you need a replacement fast. Crescent makes it simple with our NO B.S. WARRANTY.

### **JOBBOX NO B.S. 1-Year Warranty**

#### **Product Categories**

- On-site Storage Products (chests, piano boxes, field offices, cabinets, rolling work benches)
- Transfer Tanks

### **JOBBOX NO B.S. 5-Year Warranty**

#### **Product Categories**

- Crossovers
- Drawer Storage
- Innersides
- Topsides
- Trail Tongue Boxes
- Truck Chests
- Underbed Truck Boxes

### **Crescent Tool Storage NO B.S. 3-Year Warranty**

#### **Product Categories**

- Crescent Tool Bags



**NO B.S.  
LIFETIME  
WARRANTY**

**MAX  
DURABILITY  
BUILT TO LAST**

**HIGH  
VALUE  
QUALITY PERFORMANCE**



# MORE THAN TOUGH

— | —  
We know it's not just horsepower,  
but brainpower that gets the job done right.  
— | —



**NO B.S.**  
**LIFETIME**  
**WARRANTY**